

ISSUE  
NUMBER  
ELEVEN

# *Excavation* **SAFETY**



Special  
PASA Edition!  
Exclusive  
Agricultural Content

GUIDE & DIRECTORY™

# Farm & Ranch

# Call or click before you dig

Call 811 or contact your local One Call system

## Respect the marks

Flags, paint, or other markers (normally yellow for pipelines)

## Wait the required time

Generally 48 to 72 hours, depending upon state requirements

## Excavate with care

Pothole or hand dig to determine exact location of pipelines



America's 3.3 million miles of regulated pipelines<sup>1</sup> combined with our nation's 3.4 million producers leads to a lot of digging over millions of miles of infrastructure.<sup>2</sup> The farming revolution that began in the 1800s transformed life in America and is the foundation that has allowed the United States to feed millions every year. The energy revolution today provides an opportunity to access previously untapped natural resources that transform the way we live our lives. The safest way to transport energy is through America's growing network of infrastructure. Becoming aware of this network, identifying utility markers in and around the dig area, completing a pre-excavation checklist, and maintaining awareness of emergency response procedures are some of the ways we can prevent damages and protect our communities.

The Pipeline Ag Safety Alliance (PASA) works with the National Association of County Agricultural Agents to help keep our buried infrastructure, environment, and America's farmers and ranchers safe. Pipeline companies perform regular maintenance on their systems to ensure safe operation, but unsafe digging practices pose a major risk. State laws require that any ground disturbing activities be preceded by a request to have underground utilities located. PASA and local extension professionals continue to work together to educate and inform the agricultural community on safe digging practices to help America's farmers and our pipeline systems grow safely together.

For information on gas transmission and hazardous liquid pipelines, liquefied natural gas plants, and breakout tanks, visit the National Pipeline Mapping System (NPMS) at [npms.phmsa.dot.gov](http://npms.phmsa.dot.gov).

**Note the Public Map Viewer must not be used to identify exact locations of pipelines or as a substitute for contacting the appropriate One Call system or pipeline operator prior to excavation activities.**

<sup>1</sup> Pipeline and Hazardous Materials Safety Administration

<sup>2</sup> 2022 U.S. Census of Agriculture

## Pipeline Safety Guidelines

### Know the hazards

- Natural gas and other petroleum products will ignite and burn.
- If exposed to the skin, serious irritations may occur.
- Escaping gases can displace oxygen.

### Recognize unsafe conditions

- Pipelines that are: leaking, damaged, insufficiently supported, exposed to high heat, or threatened by natural forces are all unsafe conditions.
- Any damaged or weakened pipeline must always be checked by the pipeline company for remaining strength. Even very minor damages can cause future leaks or ruptures and must be investigated.
- Pools of liquid, blowing dirt, hissing sounds, vapor clouds, gaseous odors, bubbles in standing water, dead vegetation and frozen soil or ice next to pipelines are all signs of a pipeline leak and should be treated as an emergency.

### Respond immediately

- Immediately leave the area while avoiding any action that may cause sparks. Abandon all equipment and get a safe distance away.
- Call 911 and then immediately notify the pipeline company.
- Keep others away until emergency officials arrive. Stay upwind, and do not attempt to operate pipeline valves or extinguish any pipeline fires.





# CONTENTS

2026 PASA FARM & RANCH EXCAVATION SAFETY GUIDE & DIRECTORY

## 2 Letter from PASA

## AG SAFETY

What you should know.

- 4 The Invisible Right-of-Way
- 6 Below the Surface: Why 811 Matters on the Farm
- 8 Safeguarding Our Farms: Why Calling 811 Before Deep Ripping is Essential
- 10 From Fence Posts to Water Lines: When to Contact 811 on the Ranch
- 12 Respect the Right-of-Way
- 14 Know Before You Dig: Why Farmers and Ranchers Need an Arborist in Their Corner
- 15 Farmers Know the Land – But Underground Lines Change the Game
- 16 What's Buried Beneath Your Boots

## RESOURCE DIRECTORY

A collection of invaluable information and resources.

- 18 Pre-Excavation Checklist Before Every Excavation (English)
- 19 Pre-Excavation Checklist Before Every Excavation (Spanish)
- 20 Understanding the Marks: Locating and Marking Practices
- 21 Excavation Best Practices
- 22 Mapping the Invisible: A Farmers' Guide to the National Pipeline Mapping System
- 24 Potential Hazards Associated with Pipelines and Pipeline Facility Leaks
- 25 Recognizing a Pipeline Leak
- 26 Pipeline Location Information
- 27 Notification Center & State Law Directory
- 34 811 vs 911 & Community Liaison Services
- 35 PASA Member Operator Directory

This manual is an informational and educational guide, but it is not intended to provide you with any definitive information regarding legal issues. You need to follow your specific state laws and OSHA rules. If you have any questions on issues raised in this guide, please consult with legal counsel and/or your state One Call center.

The Excavation Safety Guide is designed to be a reference for readers to use all year long. The articles are concise, to the point and focus on current industry trends and technologies. The resources include the CGA Excavation Best Practices, a complete U.S. One Call center listing along with the state laws and provisions, plus much more. Protecting the buried infrastructure is becoming more of a challenge every day and this guide will help you navigate through these challenges.

The Excavation Safety Guide is published by:

**Pipeline Ag Safety Alliance**  
**PO Box 644**  
**Conway, AR 72033**

*PipelineAgSafetyAlliance.com*

Manufactured and printed in the United States of America. The contents of this publication may not be reproduced by any means, in whole or in part, without the prior consent of Pipeline Ag Safety Alliance. To unsubscribe, please e-mail [Whitney@AligningChange.com](mailto:Whitney@AligningChange.com).

# The Invisible Right-of-Way

A COMPREHENSIVE GUIDE TO DEPTH OF COVER, SOIL PRESSURE, AND PIPELINE SAFETY FOR THE AGRICULTURAL COMMUNITY

In the heart of the American farm, the ground beneath a tractor's tires is more than just a medium for growth; it is a complex infrastructure corridor. Thousands of miles of pipelines traverse rural lands, delivering the natural gas, petroleum, and essential fuels that sustain our economy. For decades, the agricultural community and the pipeline industry have coexisted in a silent partnership. However, as modern farming practices evolve—characterized by heavier machinery and advanced water management systems like drain tiling—the margin of safety regarding “depth of cover” has become a critical point of concern. For the County Agricultural Agent, understanding these risks is essential to providing the life-saving guidance that keeps our producers safe and our energy supply secure.

## The Safety Mandate: API RP 1162 and the Agent's Role

The safety of our nation's pipeline infrastructure is governed by stringent standards, most notably, the American Petroleum Institute's Recommended Practice 1162 (RP 1162). This regulation isn't merely

As an Agricultural Agent, you are often the primary point of contact for these producers. When a farmer contemplates a major land-use change, such as installing a new drainage system, they often turn to you first. This publication serves as an RP 1162-compliant resource to help you explain why “business as usual” can lead to catastrophic consequences when the integrity of the soil cover is compromised.

a set of rules for operators; it is a communication mandate designed to ensure that those who work the land are fully aware of the hazards beneath them. RP 1162 emphasizes the “affected public,” which includes farmers and ranchers who frequently engage in excavation-type activities.

## The Myth of Permanent Depth

One of the most persistent and dangerous assumptions in rural America is that a pipeline's burial depth is a permanent, static number. Many producers believe that if a pipe was buried four feet deep in 1975, it remains four feet deep today. Unfortunately, the topography of a working farm is constantly in flux. Wind and water erosion can strip away inches of topsoil over a single season. Conversely, historical land-clearing or previous grading projects may have thinned the cover in ways that aren't visible to the naked eye.

“Depth of cover” refers to the vertical distance between the top of the buried pipe and the surface of the ground. This layer of soil acts as a mechanical shield, protecting the pipe from the environmental elements and the physical impact of farming. When this shield is thinned—whether by nature or by the plow—the pipe becomes vulnerable to “mechanical interference,” which is a polite industry term for a high-pressure strike.

Agricultural agents must reinforce the message that the only way to verify the current depth of cover is through direct communication with the pipeline operator via the 811 system.

## The Drain Tiling Challenge

Drain tiling has revolutionized agricultural productivity, allowing producers to manage water tables and maximize crop yields in low-lying areas. However, from a pipeline safety perspective, drain tiling is one of the most invasive “shallow” excavation activities. Unlike traditional tillage, which works the top 8 to 12 inches of soil, tiling plows and trenchers often reach depths of 3 to 5 feet—the exact zone where many high-pressure pipelines are located.

Precision agriculture tools, such as GPS-guided tiling, allow for incredible accuracy in water management, but they can create a false sense of security. A GPS unit knows where the tractor is, but it doesn't know where the pipeline is. When a farmer attempts to change the depth of cover by grading a field for better drainage, they may inadvertently remove the safety margin protecting a buried line. If the tiling plow crosses the pipeline right-of-way (ROW), the risk of contact is extreme. Furthermore, changing the grade can leave a pipeline permanently exposed to deeper tillage practices or the heavy weight of grain carts during harvest.

## Physics Under the Tread: Heavy Equipment and Soil Pressure

Perhaps the most misunderstood risk in modern farming is the impact of “external loading”—the sheer weight of heavy machinery passing over a buried line. Today's articulated tractors, massive combines, and 1,000-bushel grain carts exert incredible downward pressure on the soil. This force is not just



vertical; it creates a “pressure bulb” that radiates outward and downward through the soil profile.

When a pipeline is buried with adequate cover, the surrounding soil acts as a distributor, spreading that weight evenly around the circumference of the pipe. However, if the depth of cover has been thinned—either by erosion or by intentional grading—the soil can no longer effectively distribute that weight. The result is a concentrated “point load” on the pipe. This pressure can cause the pipe to deflect or “ovalize,” putting immense stress on the longitudinal welds. In wet or saturated soils—common during the spring tiling season—the soil provides even less support, allowing the pipe to shift or bend. Repeated crossings with heavy equipment

over a shallow line can lead to structural fatigue and, eventually, the possibility of catastrophic failure.

### **The Right-of-Way: A Shared Responsibility**

The pipeline right-of-way (ROW) is a legally defined easement that grants the operator the ability to maintain and protect their infrastructure while allowing the landowner to continue using the surface for agriculture. However, this easement often includes restrictions on “changing the grade.” Farmers must understand that adding three feet of soil over a pipe is just as dangerous as removing three feet. Excess soil can impede the operator’s ability to monitor the line for leaks or perform emergency maintenance.

**The key to a safe ROW is transparency. Pipeline operators are not looking to stop a farmer from tiling; they are looking to ensure the tiling is done in a way that respects the physics of the buried line. Many operators will offer to have a technician on-site during the tiling process to verify the location and monitor the work at no cost to the farmer. This “watch and wait” service is the gold standard of damage prevention.**

### **Conclusion: Cultivating a Culture of Vigilance**

You are the voice of safety in the rural community. When you speak, farmers listen because you understand the unique pressures of the agricultural lifestyle. We ask that you integrate these safety talking points into your winter meetings, your newsletters, and your farm visits. Remind your producers that “Call Before You Dig” applies to the farm just as much as it does to a suburban construction site.

By focusing on the invisible risks of depth of cover and equipment pressure, we can move beyond the basics of 811 and into a more sophisticated understanding of damage prevention. Together, we can ensure the land remains productive and the energy that fuels our farms continues to flow safely beneath our feet.



# Below the Surface: Why 811 Matters on the Farm

BY JAY RICHARDSON, DAMAGE PREVENTION LIAISON, WEST TENNESSEE

As farmers, we get dirty from time to time. Sometimes it is field dirt, other times it is oil, grease, or fuel. Those stains tell a story, and sometimes they remind us we should have used a little more care. Farming has always come with hazards we can see, from moving belts and PTO shafts to heavy equipment and livestock. But one hazard is easy to forget because it is out of sight: underground utilities. Farm life may feel a long way from



town, but rural properties still depend on many of the same services as anywhere else, including water, electricity, natural gas, phone, and internet. In some places, what lies below the surface is not just a service line to a house, barn, or shop. It may also be a transmission pipeline crossing cropland, pasture, or open right-of-way. Many of those lines



were installed years ago, long before fields were combined, fencerows were removed, and farms changed hands. The Pipeline and Hazardous Materials Safety Administration (PHMSA) says the United States has about:

- 2.37 million miles of gas distribution lines
- 411,827 miles of gas transmission and gathering lines
- 228,478 miles of hazardous liquid or carbon dioxide pipelines

That is a lot of buried infrastructure and a great deal of it runs through rural America.

That is why 811 matters on the farm. A call or online request should be part of the plan before tiling, trenching, ditching, setting fence posts, grading, planting trees, putting in water lines, replacing culverts, building pads, or doing any other work that disturbs the ground. Even routine jobs can become dangerous in seconds if a buried utility is struck. If the ground is being opened, cut, driven into, or disturbed, it is worth checking first rather than assuming you know what is underground from memory or from an old marker post.





Every state has an 811 system you can contact and a website you can visit, so checking your particular state's legal requirements for notification and excavation is important.

The effects of damaging an underground utility are not all the same. Losing internet, phone service, or water can be frustrating and costly, but striking an electric or natural gas line can turn deadly in seconds.

The basic steps are simple:

- Contact 811 a few business days before digging and wait for the utilities to respond
- Make sure all utilities listed on the ticket have answered before starting work
- Once lines are marked, respect the marks and keep them visible (if rain, traffic, or field work destroys the marks, stop and get the site remarked before continuing)
- If work must happen close to a marked line, dig carefully and use safe exposure methods (hand dig or use vacuum excavation to expose a buried facility in the tolerance zone rather than relying on mechanized equipment)

On Dec. 5, 2017, farmers in Lee County, Illinois, were laying field tile when equipment struck and ruptured a buried 20-inch high-pressure natural gas pipeline. Two owners were killed and two employees were injured. The incident is a reminder that buried pipelines can have serious consequences in rural areas.

Education and outreach on underground utility safety is an important part of why 811 is always looking for opportunities to connect with the agricultural community at local meetings and events. For several years, 811 centers from Arkansas, Mississippi, Alabama, and Tennessee have partnered around the annual Mid-South Farm and Gin Show to meet farmers, ranchers, and their families and provide information and resources.



The message is simple. Before you rip, trench, auger, tile, or drive posts, contact 811 and “Know What’s Below.” Look for signs of underground facilities and change the plan if marks place a buried line too close to the work.

On the farm, knowing what is below the surface can be just as important as knowing what is growing above it. Reach out to your state 811 call center if you have any questions. We are here for you.



# Safeguarding Our Farms: Why Calling 811 Before Deep Ripping is Essential for the Safety of People, Pipelines, Communities, and the Environment

BY MICHAEL D. LARK, BUCKEYE PARTNERS L.P.

American farmers take pride in caring for the land that feeds our nation. Many rely on proven practices like deep ripping to improve soil health and boost crop performance. Yet beneath countless fields lie high-pressure oil and gas pipelines, vital infrastructure that delivers energy safely every day. When deep ripping proceeds without first contacting 811, the results can be devastating. This article explains the risks and offers practical guidance to keep operations running smoothly while protecting lives, land, and livelihoods.

Deep ripping, subsoiling, chisel plowing in hardpan layers, and plowing in drainage tile have become standard tools across American agriculture. Heavy machinery and repeated field traffic compact soil layers, restricting root growth, limiting water movement, and reducing yields. A deep ripper equipped with sturdy shanks and high horsepower can break up those hardpan zones, often reaching 18 to 36 inches or deeper. The payoff is real: better drainage, stronger roots, improved nutrient uptake, and higher productivity in the seasons that follow. Agricultural experts have long highlighted these benefits for fields show-

ing signs of compaction from tractors, combines, or even no-till systems that still accumulate compaction over time. Farmers who invest in proper soil management see the difference in healthier crops and more resilient operations.

At the same time, many productive agricultural fields contain underground high-pressure pipelines carrying crude oil, natural gas, or refined products. These lines form part of the backbone of our energy supply, moving millions of gallons daily with an excellent safety record overall. They are carefully engineered, maintained, and monitored. Pipeline companies work hard to be good neighbors to rural landowners. Still, the presence of these pipelines introduces serious consideration for any deep-soil work.

The greatest danger occurs during any field activity that reaches deeper than surface tillage (top 6-8 inches). Trenching for drainage tile, chisel plowing through hardpan layers, subsoiling, and deep ripping can all easily make contact with a buried pipeline. Farm equipment can exert tremendous downward force. A single strike or even a scrape can rupture the pipeline

or damage its protective coating. The results can be immediate and catastrophic: a sudden release of flammable product, the potential for fire or explosion, serious injury or loss of life to anyone nearby, and widespread soil or water contamination. Even minor damage that goes unreported can lead to corrosion, leaks, and environmental harm years later. Cleanup costs, lost production, regulatory penalties, and liability concerns can burden a farm operation for seasons to come. One preventable incident affects not only the individual grower but neighboring families, local communities, and the broader agricultural landscape.

What makes the situation especially challenging is that pipeline depth and location are not always what they appear. Many farmers assume lines sit several feet down based on original installation or past experience. In reality, depths vary widely and change over time. Erosion, earlier earth-moving projects, terracing, changing topography, or even gradual soil shifts can leave lines surprisingly shallow, sometimes less than 12 inches below the surface. Pipeline markers placed along field edges or rights-of-way provide only a general indication of the pipe-

line's location; they do not show exact position or depth. Lines may curve or sit at different elevations than remembered. Relying on memory or surface signs alone is simply not wise nor safe. This is precisely why the nationwide One Call system exists as a free, straightforward safeguard. The service, which can be reached by dialing 811 or online via **811beforeyoudig.com**, connects farmers instantly with the right pipeline and utility operators.

#### Provide basic details:

- Location of the field
- Type of work planned (deep ripping/subsoiling or tiling)
- Approximate start date

Within a few business days, professionals arrive to locate and mark the lines with paint, stakes, or flags according to state requirements.

Contacting 811 is a smart investment in uninterrupted, worry-free work. Pipeline operators do far more than mark lines. Many operators will discuss options with the farmer:

- Adjusting ripper depth in the right-of-way
- Using shallower passes near the line
- Having a company representative present during critical sections

This partnership approach respects the farmer's schedule while protecting the pipeline's integrity. Minor nicks or coating damage that might go unnoticed can lead to corrosion and future leaks if left unrepaired, which is another reason operators encourage immediate notification of any contact, no matter how small.

Pipeline operators work hard to collaborate with farmers, approaching the relationship as partners and neighbors in the community, rather than as a restrictive presence. They understand the pressures and timing of planting and harvest seasons, and they share the same priorities: productive fields and safe operations. Operators often provide practical guidance on crossing the right-of-way with heavy equipment, avoiding soil stockpiles directly over the line and maintaining proper clearance for drain tile or other improvements. The goal remains consistent: support farming operations while keeping everyone safe.

#### A few practical steps make the process even smoother:

- Plan ahead and submit the 811 request several days before equipment rolls into the field
- Clearly define the work area so pipeline representatives can mark the entire impacted area
- Respect the pipeline locate marks once placed; treat them as boundaries and work carefully within tolerances

If plans change or work extends beyond the original ticket timeframe (usually 10–14 days depending on state rules), renew the request promptly. Keep emergency numbers handy: the pipeline operator's 24-hour line and local 911. Should equipment ever nick, expose, or strike a line, stop immediately, move a safe distance upwind, eliminate ignition sources, and call for help. Do not attempt to complete repairs yourself.

Building better soil and stronger farms requires stewardship above and below the surface. The 811 system exists for people like busy farmers who move more earth than anyone else. It's free, fast, and delivers peace of mind. One simple call before chisel plowing, subsoiling, installing drainage, or performing any deep soil-penetrating work near known or suspected pipelines protects your most valuable assets: you, your family, your land, and your community. Good stewardship also means respecting rights-of-way agreements and reporting any concerns promptly.

Buckeye Partners stands ready to assist and wants your fields to thrive. When everyone on the farm, family members, employees, and utility operators treat 811 as standard procedure, safety naturally becomes part of the culture.

The message is clear: American agriculture and the nation's energy infrastructure can coexist and succeed when communication comes first. Safety and productivity work hand in hand, and it all starts with one free call or click.

***The greatest danger occurs during any field activity that reaches deeper than surface tillage (top 6–8 inches).***

# From Fence Posts to Water Lines: When to Contact 811 on the Ranch

BY JENNIFER PATTERSON, PAYNE COUNTY OSU EXTENSION, STILLWATER, OK

Property improvement and continuous activity are the “norm” on most cattle operations. From routine maintenance to long-term infrastructure projects, ranch work often involves some level of soil disturbance. What many producers don’t realize is how easily these everyday activities can turn into serious safety hazards when underground utilities or pipelines are involved.

Being aware of what lies beneath the surface is critical. Many ranches, especially those with a history of

development or utility installation, may have buried pipelines, electric lines, or water lines that are not immediately visible. It is important to become familiar with pipeline right-of-ways (ROWs), easements, and marker signs on your property. However, even with that awareness, you should never assume exact locations or safe digging depths. The only way to truly know is to verify before you begin work.

Most incidents involving some form of underground utilities occur during routine ranch tasks; often

when producers least expect it. Activities such as:

- Building or repairing fences
- Setting posts
- Installing cattle guards
- Digging ponds
- Laying water lines
- Constructing corrals
- Pasture renovation
- Brush clearing with heavy equipment

All of these activities have the potential to disturb buried infrastructure. Even smaller jobs, like replac-



ing a corner post or cleaning out a ditch line can pose risks if proper precautions are not taken.

In addition to direct excavation, repeated use of heavy equipment, such as tractors, skid steers, and trucks can create long-term pressure on the soil. Over time, compaction and erosion may have an impact on the integrity of underground pipelines or utilities. These indirect effects are often overlooked but can still contribute to failures or exposure of buried lines.

The consequences of striking a buried utility can be severe. Contact with a natural gas or petroleum pipeline could result in fire or explosion. Damaging an electrical line may lead to electrocution or arc flash. These incidents pose immediate danger to operators, anyone nearby, and in many cases,

can result in serious injury or loss of life.

Livestock are also at risk. A pipeline leak could contaminate soil or water sources, directly impacting your animal's health. Escaping gases may create hazardous air conditions, leading to respiratory distress or asphyxiation in confined or low-lying areas. These situations not only threaten herd health but can also have significant economic impacts on the operation.

Beyond the immediate danger, long-term disruptions can affect both the ranch and surrounding community. Damage to utilities may result in loss of electricity, water, or gas service, interfering with feeding, watering, and daily livestock management. Depending on the severity, downtime can be extensive. This affects the bottom dollar.

There are also financial and legal consequences to consider. Repair costs, fines, and liability for damages can be substantial. In many cases, the ranch operator may be held responsible, UNLESS proper steps were taken to prevent the incident.

Fortunately, these risks can be greatly reduced with one simple step: contacting 811 before starting any ground-disturbing activity. This free service connects you with utility locators who will mark buried lines on your property. It is fast, easy to use, and provides critical protection for you, your livestock, and your operation.

Before you dig, build, or disturb the soil, make the call! It's a small step that can prevent a major accident.



# Respect the Right-of-Way

BY RAYMOND SONNIER, DAMAGE PREVENTION COORDINATOR, LOUISIANA 811

Across Louisiana and much of the United States, rural property owners live and work around underground pipelines every day. These pipelines transport natural gas, petroleum products, and other critical energy resources beneath farmland, timber tracts, and family properties. Because they are underground and often out of sight, many landowners underestimate their presence...or worse, forget they are there entirely.

One of the most common issues reported to damage prevention professionals happens when property owners build fences, gardens, barns, sheds, culverts, ponds, driveways, and other improvements directly on top of pipeline rights-of-way. While these projects may seem harmless, they create significant safety, operational, and legal concerns for landowners, excavators, and pipeline operators alike.

## What Is a Pipeline Right-of-Way?

A pipeline right-of-way (ROW) is a strip of land where a pipeline company has legal access to install, operate, inspect, maintain, and repair underground infrastructure. In many cases, this access is secured through easements recorded on the property deed. Different states have different laws about pipeline rights-of-way.

To some property owners, a right-of-way may appear to be “unused” open land. Grass grows over it. Equipment can cross it. It may blend into the surrounding field. But that open space is intentionally preserved for a reason: pipeline operators must be able to access the line quickly and safely when needed.

Any structure or obstruction built within that corridor can interfere with emergency response, routine maintenance, and visual inspections.

## Why Building on Pipeline Rights-of-Way Is Dangerous

### 1. It Increases the Risk of Damage

Many landowners begin projects without fully realizing a pipeline runs beneath the area. Fence posts, building foundations, drainage improvements, tree planting, and landscaping all involve digging...sometimes deeper than expected.

Even shallow excavation can damage pipeline coatings, expose pipe, or in severe cases strike the line itself. A pipeline strike can result in:

- Gas releases
- Fire or explosion
- Soil contamination
- Injuries or fatalities
- Service disruptions to surrounding communities

The most preventable pipeline inci-



dent is the one caused by someone simply not knowing or not respecting what lies below.

### 2. It Restricts Emergency Access

In the event of a leak, emergency shutdown, or required repair, pipeline operators may need immediate access to the affected area.

Structures placed on top of the right-of-way slow response times and create obstacles for crews trying to reach the line. Imagine needing to get access to a leaking pipeline beneath a newly built shed, decorative retaining wall, or concrete driveway. Every minute lost removing those obstacles can increase the severity of the incident.

### 3. It May Violate Easement Agreements

Many property owners are unaware that building permanent structures on pipeline easements may violate terms of their property agreement.

Pipeline companies may have the legal right to require removal of encroachments at the property owner's expense. That means a landowner may invest thousands of dollars into a shop, fence, pond, or landscaping project only to later be told it must be relocated or demolished.

## Encroachments Seen in Rural Areas

Utility operators have encountered these structures built within pipeline rights-of-way:

- Fences with deep-set corner posts
- Metal barns and pole sheds
- Livestock pens and corrals
- Raised garden beds and irrigation systems
- Grain bins and storage structures
- Ponds and drainage ditches

- Septic systems
- Large trees or windbreak plantings
- Concrete driveways and culverts

### The Farmer's Perspective: Why This Happens



From a farmer or landowner's perspective, encroachments within pipeline rights-of-way are typically not intentional acts of disregard but they are often the result of practical land-use decisions.

Farmers maximize every acre of usable land. They build where it makes sense. They improve drainage where needed. They place structures where equipment flow is smart. The problem is that convenience above ground does not eliminate risk below ground.

Some agricultural producers assume utilities have been in place for decades without issue so they pose little concern. This is where education and outreach become essential.

### The Pipeline Operator's Perspective

Pipeline operators are tasked with maintaining critical infrastructure

safely while respecting private property rights.

When encroachments appear over time, operators face difficult challenges:

- Inability to inspect the line
- Reduced access for maintenance equipment
- Increased chance of third-party damage
- Additional restoration costs if emergency work is needed
- Higher public safety risk in populated or developed areas

Operators do not want conflict with landowners. However, they cannot ignore conditions that compromise pipeline integrity or public safety.

### The Damage Prevention Perspective: Communication Prevents Conflict

The best solution is proactive communication BEFORE construction begins.

#### Property owners should always:

1. Know where pipeline easements exist on their property. Review surveys, deeds, and easement documents.
2. Contact 811 before any digging project. Even "small" projects like fence posts and gardens require a locate request.
3. Communicate with the pipeline operator. If planning any improvement near a right-of-way, contact the operator before design or construction.
4. Ask questions first. Never assume a project is acceptable because a neighbor has done something similar.

Pipeline operators and 811 centers will continue educating rural communities that calling 811 is not just for contractors...it is for homeowners, farmers, ranchers, and anyone disturbing the soil.

### A Shared Responsibility

Protecting pipeline infrastructure is not solely the operator's job. It requires cooperation between:

- Property owners
- Farmers and ranchers
- Excavators and contractors
- Utility locators
- Pipeline operators
- 811 centers

When everyone understands their role, incidents decrease and safety improves.

### Open Land Does Not Mean Available Land

One of the most dangerous assumptions a property owner can make is this: "It's my land, so I can build wherever I want."

While ownership of the property is real, pipeline easements create shared-use obligations that must be respected. The right-of-way may look like open space, but it serves a critical purpose in protecting both the infrastructure below and the people above.

Building on a pipeline right-of-way may seem harmless today, but it can create serious safety, legal, and financial consequences tomorrow.

Before installing that fence, pouring that slab, planting those trees, or building that shed, please stop and ask:

### Is this project clear of the pipeline right-of-way?

A simple phone call, digital request, or conversation with the operator could prevent damage, preserve access, and potentially save lives.

### About Louisiana 811

Louisiana 811 works with excavators, homeowners, farmers, and utility operators to promote safe digging practices and protect underground infrastructure through education, outreach, and 811 notification services. Always contact 811 before digging.

# Know Before You Dig: Why Farmers and Ranchers Need an Arborist in Their Corner

BY SHAWN KINGZETTE, SALES ARBORIST TRAINER (CHICAGO LAND), THE DAVEY TREE EXPERT COMPANY

When most people think about farming and ranching, they think about what is growing above the ground, crops, livestock, fences, and buildings. But what lies beneath the surface can be just as important, and far more dangerous if ignored.

Tree planting, stump removal, and land clearing are routine parts of farm life. But when those tasks involve digging, they carry risks that even seasoned farmers may not fully appreciate. That is where partnering with a professional arborist and a team that can develop a comprehensive land management plan makes all the difference.

## Calling 811 Is Just the Beginning

Most landowners have heard of 811, the national “Call Before You Dig” number. It is an essential first step, and on a farm or ranch, it is absolutely non-negotiable. Rural properties carry decades of history, old private lines, septic fields, and forgotten infrastructure. A gas line servicing an old workshop or a power line running to a long gone outbuilding are common things that exist on properties everywhere, often without any record or memory they exist.

## The Unexpected Runs Deep

There are documented cases of high-pressure fuel pipelines running directly through what appeared to be completely unremarkable rural properties, with no airports or industrial facilities anywhere in sight. Direct supply lines between fuel terminals and regional airports have been discovered mid-project in locations where nothing about the landscape would have suggested they existed. These situations are a reminder that assumptions are dangerous when it comes to what lies underground.

## The Role of a Certified Arborist

Before any digging begins, a certified arborist brings expertise that goes far

beyond tree trimming. On a farm or ranch, an arborist can assess existing trees for structural risk, identify species that may have invasive root systems capable of reaching underground infrastructure, and recommend safe placement for new plantings. They evaluate tree health, identify disease or pest pressures that could destabilize root systems near utility corridors, and develop removal or preservation plans that account for what is happening



above and below the surface. When land clearing is part of a larger agricultural project, that level of assessment is not optional. It is essential.

## A Full Team, A Full Plan

The most effective approach combines certified arborist expertise with broader natural resource planning. A team that includes biologists, wetland scientists, environmental consultants, and land use planners can look at the whole property, not just the trees. That means evaluating vegetation management across the entire site, managing inva-



sive species that compete with crops or native plants, assessing wetlands and drainage patterns that affect where and how digging can safely occur, and developing a long-term land management strategy that protects both the operation and the ecosystem it depends on.

From integrated vegetation management programs to land surveying and civil engineering design, having that full range of expertise under one roof means every project moves forward with the right eyes on every variable.

## Before the Season Starts, Call the Professionals

Whether the goal is establishing a windbreak, clearing land for a new field, or managing existing trees on the property, the right team brings both the technical knowledge and the planning resources to do the job right. Partnering with a company that offers certified arborists alongside natural resource planners means having a single point of contact for everything from tree risk assessment and vegetation management to full environmental consulting and land use planning.

Before the next planting season or clearing project, bring in a team that can assess both what is growing and what might be buried. The right professionals will make sure the work gets done safely, efficiently, and with the full picture in mind.

Shawn Kingzette, Board Certified Master Arborist, and a Tree Risk Assessment Qualified professional through the International Society of Arboriculture and celebrates 30 years with The Davey Tree Expert Company in June. With 32 years of experience in arboriculture, he has spent his career serving residential and commercial clients. He holds a Bachelor of Science in Biology from Loyola University Chicago and a Master's in Natural Resources from the University of Illinois. Shawn now trains and coaches arborists across the company on effective client solutions, bringing decades of hands-on expertise in tree care, risk assessment, land management, and operations to every engagement. He is based in the Chicago area.

# Farmers Know the Land — But Underground Lines Change the Game

BY KEMP GARCIA, DAMAGE PREVENTION MANAGER, DIG LAW ADVOCATES

If you work the land, you already understand risk. Weather, markets, equipment — every day brings something new. But there's one risk that's easy to overlook because you can't see it: underground utilities.

In November 2023, a farmer outside Pullman, Washington learned this the hard way. While installing drain tile, he didn't contact 811. While there are exemptions in Washington law for agricultural tilling, it should be understood that contacting 811 is safer. Below are the exemptions in RCW 19.122:

- Up to 12 inches deep within a utility easement
- Up to 20 inches deep outside an easement

Exemptions don't tell you what's actually under your soil. And in this case, a high pressure pipeline carrying product at 700 psi ran right through the field.

When the equipment struck the line, the force launched a 38,000 pound machine more than 30 feet into the air. Three workers were on site. By pure luck, no one was killed.

## When a Line Goes Down, the Whole Community Feels It

The rupture didn't just damage equipment — it shut down service to over

38,000 customers for more than a week in the chill of December. Even after the line was repaired, more than 1,000 workers had to visit homes and businesses to safely relight pilot lights and ensure safe properties.

The farmer faced community frustration, and even simple errands came with people shouting, "You should have called 811."

## Fines Are Increasing — And So Are Expectations

The Washington Utilities and Transportation Commission (UTC) issued a \$10,000 fine, the maximum allowed at the time. As of July 27, 2025, the maximum fine for damaging a hazardous pipeline jumped to \$25,000. Some states go as high as \$100,000.

Intent doesn't erase responsibility. And the law is getting stricter.

## Why Contacting 811 Matters — Even If You're Exempt

Farmers know their land better than anyone. But no one can see underground. That's why the safest move — every time — is to call or click 811 before you dig.

It's free. It's fast. And more than 80% of requests are now submitted online.

Visit [FARMSAFE811.org](https://FARMSAFE811.org) for more information.

## Pipeline Operators Are Trying to Help — But They Need You Too

Williams Pipeline, the operator of the damaged line, sends required safety mailers but most people never read them. They fly weekly patrols to spot digging activity. They show up at local events. And when a farmer calls in a locate, they often visit personally and bring materials to help keep everyone safe.

But they can't track every land sale or lease. Sometimes they don't learn about ownership changes for years.

## Pipelines Are Safe — Until They Aren't

Pipelines are one of the safest ways to move energy, but accidents still happen. In November 2025, a leak in the BP/Olympic Pipeline forced fuel to be trucked to Seattle Tacoma International Airport and required emergency driver hour extensions to keep planes fueled.

When a pipeline shuts down, the ripple effects spread fast.

## Your Family Wants You Home Safe

At the end of the day, exemptions don't prevent accidents. A quick 811 request does. Farmers already carry enough risk. This is one risk you don't have to take.

## Make the call. Make the click. Protect your land, your operation, and the people who depend on you.

Kemp was recognized for his long standing commitment to safety and education when he was named Damage Prevention Hero of the Year in 2025. He continues to support contractors and industry partners with practical, experience driven guidance focused on preventing underground utility damages and strengthening the culture of safety across the excavation community. Kemp advances this mission through his company, Dig Law Advocates.



# What's Buried Beneath Your Boots

BY BOB NIGH SWONGER, PRESIDENT, UTILITY TRAINING ACADEMY

On a ranch or farm, you develop a strong understanding of your land over time. You recognize how water moves across it, how the soil behaves in different seasons, and how past work has shaped what you see today. That knowledge comes from experience, repetition, and attention to detail. It is one of the greatest strengths of those who work the land. I spent many years in my childhood working on a dairy farm where a natural gas well was simply part of the landscape, something we saw every day and rarely thought twice about.

In many cases, that same confidence extends below the surface.

You believe you know where everything is buried, like the water line to the barn, the power to the well, the drainage tile running across the field, and even the location of high pressure cross country energy pipelines or fiber optic cables that may cross or border your property. Those assumptions often come from past work, memory, or what has been passed down over time.

But there is a hard reality that applies to every property.

Memory is not a reliable map, especially underground.

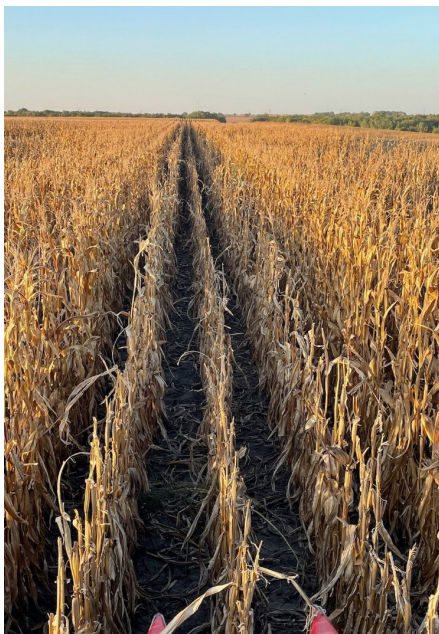
Most buried utilities on agricultural properties were installed over time, not as part of a single coordinated plan. A water line is extended to a new structure. Power is rerouted to support new equipment. A trench is opened, backfilled, and eventually forgotten. These installations are often completed years apart, sometimes by different people, with little or no long-term documentation.

As time passes, details begin to fade. Land changes ownership. Projects are added. Records are misplaced or never created. Even when the same person

remains on the property, the exact details become less certain. What was once clear becomes approximate.

Was the line installed at a consistent depth or did it vary along the route? Did it follow a straight path or adjust around obstacles? Was tracer wire installed and is it still intact? These are not minor questions once excavation begins. They directly affect the ability to locate and avoid buried infrastructure.

Even in open farmland, there is often more below the surface than expect-



ed. Private systems can include water lines, irrigation systems, electrical feeds, drainage tile, and fuel systems such as propane lines and private gas service lines running from a meter at the road across a pasture, to a home or building. Many of these systems extend long distances and are constructed from non-metallic materials that cannot be located electronically. In addition to private infrastructure, many rural properties are crossed

by larger systems that serve a much broader purpose. High pressure pipelines, long distance fiber optic cables, and electrical distribution lines are commonly installed across agricultural land. These facilities are often placed within easements that may not be obvious during day-to-day operations.

Surface markers may indicate that something is present, but they do not define the exact location of the buried facility. These systems may not follow a straight or predictable path and relying on visual alignment alone can be misleading.

The risk is not limited to damaging a line. It is defined by what happens next.

Damaging a private water line may interrupt operations and require repair. Contact with an electrical line introduces immediate danger to both people and equipment. Striking a pipeline or major communication line can create consequences that extend far beyond the property, including safety hazards, service disruptions, and significant financial exposure.

Many of these incidents come down to one thing. Assuming you know where the line is.

Out of sight, out of mind is a real condition in rural environments. The ground looks open so it is treated as if nothing is there. But buried infrastructure does not have to be visible to be present, and it does not have to be congested to be dangerous.

A single misjudgment is all it takes.

One of the most effective ways to reduce this uncertainty is to create and maintain a basic map of private underground utilities. This does not require advanced technology. It requires awareness and consistency.



Start with fixed reference points such as buildings, wells, tanks, and other permanent features. Document the approximate routes of pipes and cables and record distances from those reference points. When new installations take place, use the opportunity while the trench is open to capture measurements, take photographs, and note the materials and installation methods used.

Modern farming operations are increasingly using Global Positioning Systems (GPS) guided equipment and digital mapping systems to manage field activities with a high degree of accuracy. These same systems can be used to store the approximate location of drainage tile, irrigation lines, and other private infrastructure. When that information is available in a mapping system, it gives the operator another layer of awareness when performing deep tillage or excavation work. While it does not replace proper locating practices, it supports better planning and helps reduce the likelihood of unknowingly working into a buried utility.

If GPS or digital mapping tools are available, they can improve accuracy. However, even a simple recorded sketch is more reliable than relying on memory alone. The important princi-

ple is straightforward. Information is most accurate at the time of installation. Once the ground is closed, that information begins to degrade.

Another critical step in protecting both private and public infrastructure is the use of 811.

There is a persistent misconception that 811 is intended primarily for urban construction. In reality, it is a system designed to protect anyone performing excavation, regardless of location. Contacting 811 before digging notifies utility owners of planned work so they can identify and mark their buried facilities.

This includes pipelines, fiber optic systems, and electrical distribution lines that may cross or run adjacent to agricultural property. These are not always obvious, and in many cases, landowners are unaware they are present.

**It is important to clearly understand the role of 811. It is a notification system that results in the marking of public utilities. It does not locate private lines installed on the property. Those remain the responsibility of the landowner or contractor to identify and manage.**

At the same time, always contact 811 prior to heavy excavation on your own property. Not occasionally, and not only on large projects, but every time. There are some very dangerous lines in the ground, and not all of them are yours.

Preventing pipe and cable damages in the ag world is about identifying the risk before work begins and working safely to avoid that risk. Relying solely on memory introduces risk. These hazards can be avoided with a little extra effort.

Maintaining accurate maps and documenting utility installations is critical, but because site conditions shift and memories fade, **contacting 811 before every excavation** remains the essential final step for safer operations.

Working the land has always required smart management of conditions that are often not visible to the naked eye. Soil composition and moisture levels all influence decisions. Underground infrastructure presents a similar challenge. It cannot be seen, but it must be accounted for.

The most reliable approach is not to assume accuracy based on memory, but to recognize the limits of that memory and plan accordingly.





# Pre-Excavation Checklist

Before **EVERY** Excavation

Click  
Before  
You Dig



## In the Office

- Review all drawings, plans, engineering blueprints for existing buried facilities
- Proposed excavation area has been marked in white paint and/or flags
- Call 811 at least 2-3 business days before excavation (check your state One Call laws)
- Locate ticket number is posted at the work location
- Onsite meeting scheduled with all high profile facilities in locate area (gas/oil pipelines, high-voltage cables, fiber optic)

## Onsite

*Complete a pre-excavation walkthrough of the entire jobsite and adjacent areas*

### Visually Inspect the Jobsite

- Signs or marking posts
  - Pavement markers (stamped nails, pavement decals, A-tags)
  - Surface markers
- Other surface signage for landscaped areas
- Locate marks
- Consult any maps or field sketches of the location
- Identify all services to buildings such as:
  - Gas meters
  - Farm taps
  - Pipeline valves
  - Cable pedestals
  - Electric cables
  - Water valves
  - Telephone closures
- Look for the evidence of trench lines from the previous excavation
- Look for the cleared pipeline ROWs
- Talk with the property owner or general contractor to identify potential private facilities that may not be marked:
  - Lighting
  - Outbuildings
  - Pools/Spas
  - Irrigation
  - Sewer laterals
  - Propane tanks
  - Communications lines

### Document the Jobsite

- Compare actual jobsite to One Call ticket
  - One Call ticket covers the scope of the work
  - One Call ticket "Work to Begin" date is valid
  - All utilities have responded
  - All facilities are marked within the excavation area
- Photograph the jobsite
  - Locate marks and flags from 360°
  - Permanent signage and location relative to the dig area:
    - Note location, height, and operator of overhead lines
    - Note all required safety signage
  - Video and/or sketches where pertinent



## Before You Dig

- Review safety information with anyone working the job
- Confirm with facility owner vacuum or hydro excavation is scheduled for all pipelines impacted
- Locations for hand digging within the tolerance zone are noted
- Emergency equipment available when hazardous atmospheres are potentially present
- List of all emergency contact numbers for assets in and adjacent to the dig zone is readily available
- The location and route to the nearest hospital is known by onsite supervisors
- When possible before any excavation, do a sweep with a locator to identify any foreign lines that are not marked
- Representatives for all critical facilities are present

This document is provided for informational purposes only and does not constitute professional advice. It is intended to be used as a guide in the development of a checklist specific to your situation and may not be inclusive of all pre-excavation activities required of your situation. Consult your company's appropriate management before implementation. ACTS Now, Inc., its employees and agents accept no liability and disclaim all responsibility for the consequences of acting, or refraining from acting, in reliance of the information contained in this document or any decision based on it, or for any consequential, special incidental or punitive damage to any person or entity for any matter relating to the contents of this document.





# Lista de Verificación Para la Excavación

Antes de **CADA** Excavación

Click  
Before  
YouDig



## En la Oficina

- Revisar todos los dibujos, planos y especificaciones de ingeniería de las instalaciones subterráneas actuales
- El área de excavación propuesta ha sido marcado con pintura blanca y/o banderitas
- Marque al 811 por lo menos 2 o 3 días hábiles antes de la excavación (consulte las leyes de One Call de su estado)
- El número de solicitud está colocado en el sitio de trabajo
- Reunión programada con todas las instalaciones prominentes en el área de la localización (tuberías de gas y aciete, cables de alto voltaje, y fibra óptica)

## Sitio de Trabajo

Realice una inspección exhaustiva antes de la excavación en S todo el sitio de trabajo y las zonas vecinas

### Inspección visual del Sitio de Trabajo

- Letreros o postes de señalización
  - Marcadores de pavimento (clavos estampados, calcomanías de pavimento, etiquetas A)
  - Marcadores superficiales
- Señalizaciones de superficie para áreas ajardinadas
- Marcas de localización
- Consultar mapas o dibujos del sitio
- Identificar todos los servicios a edificios como:
  - Medidores de gas
  - Válvulas agrícolas
  - Válvulas de tubería
  - Soportes para cables
  - Cables eléctricos
  - Válvulas de agua
  - Conexiones telefónicas
- Busque rastros de las líneas de trinchera de la excavación previa
- Revise que las filas de paso de la tubería están despejadas
- Hable con el propietario o el contratista general para identificar posibles instalaciones privadas que no están marcadas
  - Luces
  - Otros Edificios
  - Piscinas/Spas
  - Sistemas de riego
  - Laterales de alcantarillado
  - Tanques de propano
  - Líneas de comunicación

### Documentación del Sitio de Trabajo

- Comparar el sitio de trabajo con el ticket de One Call
  - El alcance del trabajo se refleja en el ticket de One Call
  - La fecha de inicio anotada es válida
  - Todas las compañías de servicios públicos han contestado
  - Todas las instalaciones se encuentran señalizadas dentro del área de excavación
- Fotografía del sitio de trabajo
  - Localización de marcas y banderas en 360°
  - Señalización permanente y su ubicación relativa a la excavación:
    - Anotar la ubicación, altura y operador de las líneas aéreas
    - Anotar toda la señalización de seguridad necesaria
  - Videos y/o bocetos cuando sea pertinente



## Antes de Excavar

- Revise la información de seguridad con todos los empleados
- Confirmar con el propietario que excavación hidráulica o al vacío para todas las tuberías afectadas ha sido programado
- Anotar ubicaciones para la excavación manual dentro de la zona de tolerancia
- Equipo de emergencia esta disponible cuando hay posibilidad de atmósferas peligrosas
- La lista de todos los números de contacto de emergencia para los bienes dentro de la zona de excavación y sus zonas vecinas está disponible
- Los supervisores locales conocen la ubicación del hospital más cercano y como llegar
- Cuando sea posible, haga una inspección con equipo de localización para identificar líneas que no están
- Representantes de las instalaciones esenciales están presentes

Este documento se proporciona únicamente con fines informativos y no constituye un asesoramiento profesional. Su propósito es para utilizar como guía en el desarrollo de una lista de verificación específica para su situación y puede que no incluye todas las actividades previas a la excavación requeridas para su situación. Consulte con la dirección relevante de su empresa antes de la implementación. Pipeline Association for Public Awareness, sus empleados y agentes no aceptan ninguna responsabilidad y renuncian a toda responsabilidad por las consecuencias cualquier acción o falta de acción que se basa en la información contenida en este documento o por cualquier decisión basada en él, o por cualquier consecuencia, especial, daño incidental o punitivo a cualquier persona o entidad por cualquier asunto relacionado con el contenido de este documento.

## COLOR CODE IDENTIFIERS

|        |  |
|--------|--|
| WHITE  | Proposed Excavation  |
| PINK   | Temporary Survey Markings                                  |
| RED    | Electric Power Lines, Cables, Conduit, and Lighting Cables |
| YELLOW | Gas, Oil, Steam, Petroleum, or Gaseous                     |
| ORANGE | Communication, Alarm or Signal Lines, Cables, or Conduit   |
| BLUE   | Potable Water  |
| PURPLE | Reclaimed Water, Irrigation, and Slurry Lines              |
| GREEN  | Sewers and Drain Lines                                     |

## Understanding the Marks: Locating and Marking Practices

Chapters from CGA Best Practices. For the complete Understanding the Marks: Locating and Marking Best Practices, See CGA Best Practices at [BestPractices.CommonGroundAlliance.com](http://BestPractices.CommonGroundAlliance.com)

- 4. Locating and Marking
  - 4.01 Available Records
  - 4.02 Corrections and Updates
  - 4.03 Color Code
  - 4.04 Vacant
  - 4.05 Locator Training
  - 4.06 Safety
  - 4.07 Visual Inspection
  - 4.08 Facility Marking
  - 4.09 Positive Response to Locate Request
  - 4.10 Marking Multiple Facilities in the Same Trench
  - 4.11 Abandoned Facilities
  - 4.12 Locating Electromagnetically
  - 4.13 Facility Owner/Operator Identification
  - 4.14 Communication Between Parties
  - 4.15 Documentation of Work Performed
  - 4.16 Damage Investigation
  - 4.17 Forecasting/Planning for Predictable Workload Fluctuations
  - 4.18 Quality Assurance
  - 4.19 Trenchless Excavation
  - 4.20A Locating and Marking in Navigable Waterways
  - 4.20B Locating and Marking in Navigable Waterways
  - 4.21 Service Lines
  - 4.22 Marking Newly Installed Facilities
  - 4.23 Trouble Locate (Unlocatable) Resolution Protocol

## FACILITY IDENTIFIER

|     |                          |     |                    |
|-----|--------------------------|-----|--------------------|
| CH  | Chemical                 | E   | Electric           |
| FO  | Fiber Optic              | G   | Gas                |
| LPG | Liquefied Petroleum Gas  | PP  | Petroleum Products |
| RR  | Railroad Signal          | S   | Sewer              |
| SD  | Storm Drain              | SL  | Street Lighting    |
| STM | Steam                    | SP  | Slurry System      |
| SS  | Storm Sewer              | TEL | Telephone          |
| TS  | Traffic Signal           | TV  | Television         |
| W   | Reclaimed Water "Purple" | W   | Water              |

## UNDERGROUND CONSTRUCTION DESCRIPTIONS

|    |                       |     |   |
|----|-----------------------|-----|---|
| C  | Conduit               | CDR | Corridor  |
| D  | Distribution Facility | DB  | Direct Buried   |
| DE | Dead End              | JT  | Joint Trench  |
| HP | High Pressure         | HH  | Hand Hole   |
| MH | Manhole               | PB  | Pull Box  |
| R  | Radius                | STR | Structure (vaults, junction boxes, inlets, lift stations) |
| T  | Transmission Facility |     |   |

## INFRASTRUCTURE MATERIAL

|     |                                     |     |                              |
|-----|-------------------------------------|-----|------------------------------|
| ABS | Acrylonitrile - Butadiene - Styrene | ACP | Asbestos Cement Pipe         |
| CI  | Cast Iron                           | CMC | Cement Mortar Coated         |
| CML | Cement Mortar Lined                 | CPP | Corrugated Plastic Pipe      |
| CMP | Corrugated Metal Pipe               | CU  | Copper                       |
|     | Cresote Wood Duct                   |     | High Density Polyethylene    |
| MTD | Multiple Tile Duct                  | PLA | Plastic (conduit or pipe)    |
| RCB | Reinforced Concrete Box             | RCP | Reinforced Concrete Pipe     |
| RF  | Reinforced Fiberglass               |     | Steel Cylinder Concrete Pipe |
| STL | Steel                               | VCP | Vertrified Clay Pipe         |





# Excavation Best Practices

Chapters from CGA Best Practices 22.0.

For the complete Excavation Best Practices, see CGA Best Practices 22.0 at [BestPractices.CommonGroundAlliance.com](http://BestPractices.CommonGroundAlliance.com)

- |      |  |                   |                                     |                        |  |
|------|--|-------------------|-------------------------------------|------------------------|--|
| 5    | Excavation                                 | Company Personnel | 5.28                                | As-Built Documentation |  |
| 5.01 | 811 Facility Locate Request                | 5.13              | 811 Center Reference at Site        | 5.29                   | Trenchless Excavation  |
| 5.02 | Delineate Area of Proposed Excavation      | 5.14              | Contact Names and Numbers           | 5.30                   | Emergency Coordination with Adjacent Facilities                            |
| 5.03 | Locate Reference Number                    | 5.15              | Facility Avoidance                  | 5.31                   | No Charge for Providing Underground Facility Locations                     |
| 5.04 | Pre-Excavation Meeting                     | 5.16              | Federal and State Regulations       | 5.32                   | Vacuum Excavation  |
| 5.05 | Facility Relocations                       | 5.17              | Marking Preservation                | 5.33                   | Facility Owner Provides a Monitor During Excavation                        |
| 5.06 | Separate Locate Requests                   | 5.18              | Excavation Observer                 | 5.34                   | Designing and Depicting for the Protection of Known Underground Facilities |
| 5.07 | 811 Center Access (24/7)                   | 5.19              | Excavation Tolerance Zone           | 5.35                   | Large/Complex Project Locate Request                                       |
| 5.08 | Positive Response                          | 5.20              | Excavation within Tolerance Zone    |                        |  |
| 5.09 | Facility Owner/Operator Failure to Respond | 5.21              | Mismarked Facilities                |                        |  |
| 5.10 | Locate Verification                        | 5.22              | Exposed Facility Protection         |                        |  |
| 5.11 | Documentation of Marks                     | 5.23              | Locate Request Updates              |                        |  |
| 5.12 | Work Site Review with                      | 5.24              | Facility Damage Notification        |                        |  |
|      |  | 5.25              | Notification of Emergency Personnel |                        |  |
|      |  | 5.26              | Emergency Excavation                |                        |  |
|      |  | 5.27              | Backfilling                         |                        |  |

# Mapping the Invisible: A Farmer's Guide to the National Pipeline Mapping System (NPMS)

As a farmer or rancher, you know your land better than anyone. You know where the low spots hold water, where the soil is thinnest, and where the best yields consistently thrive. However, beneath that familiar soil lies a massive, invisible network of energy infrastructure that powers the nation.

For the agricultural community, managing the intersection of high-production farming and underground pipelines is a daily reality. Whether you are installing new drainage tile, deep ripping, or simply replacing a corner post, knowing what is beneath your equipment is vital. This is where the **National Pipeline Mapping System (NPMS)** becomes one of the most powerful tools in your management shed.

## The Golden Rule

Before we dive into the data, there is one fact that should not be ignored: **The NPMS is a planning resource only. It is NOT a substitute for contacting 811.** Maps can show you that a pipe exists, but only a professional locator at the site can tell you where it is.

## What is the NPMS?

The National Pipeline Mapping System is a geographic information system (GIS) created by the U.S. Department of Transportation, Pipeline and Hazardous Materials Safety Administration (PHMSA). It serves as the definitive national dataset for the location of hazardous liquid and gas transmission pipelines, as well as Liquefied Natural Gas (LNG) plants.

For an Ag Agent or a producer, the NPMS is essentially a “digital window” into the infrastructure running through a specific county or tract of land.

## Key Components of the System:

- **Geospatial Data:** Digital maps showing the approximate location of transmission pipelines.
- **Attribute Data:** Information about the “what” and the “who”—including the type of product being transported and the name of the company that operates the line.
- **Contact Information:** Direct phone numbers for the operators, which is crucial for discussing right-of-way (ROW) agreements or specific farm projects.

## Why Ag Agents and Producers Should Use It

If the map doesn't replace 811, why use it at all? The NPMS is about **Pre-Planning and Risk Management.**

- **Project Feasibility:** Before you spend on a new irrigation system or a tiling project, use the NPMS to see if a major transmission line crosses your path. It allows you to design your project around the infrastructure before you ever contact 811 for a locate.
- **Emergency Preparedness:** Do you know who to call if you smell gas or see a leak in the north pasture? The NPMS provides the operator's name and emergency contact information instantly.
- **Land Acquisition:** If you are looking to rent or buy a new section, the NPMS reveals the “hidden” footprint of the land. It helps you understand any potential restrictions on where

you can build structures or plant certain crops.

- **Community Awareness:** For Ag Agents, the NPMS is a vital tool for county-wide planning. It helps agents identify which producers in their jurisdiction are “pipeline neighbors” and may need specific safety education materials.

## Understanding the Limitations

To use the NPMS safely, you must understand what it **cannot** do. The system has three specific “blind spots” that make contacting 811 mandatory:

- **The “500-Foot” Margin of Error:** The data in the NPMS is only required to be accurate within **500 feet**. In the world of excavation, 500 feet is the difference between a successful day and a catastrophic strike. The map shows the presence of a pipe, not its precision.
- **Transmission vs. Distribution:** The NPMS only tracks **transmission and gathering** lines. It generally does not show smaller distribution lines—the kind that might run gas to your farmhouse or shop. Just because the NPMS is “clear” doesn't mean the ground is empty.
- **No Depth Data:** Soil moves. Wind erosion, heavy equipment compaction, and deep-ripping can change the “depth of cover” over a pipe. The NPMS does not provide depth information. Only a physical locate can determine how deep a line is currently buried.



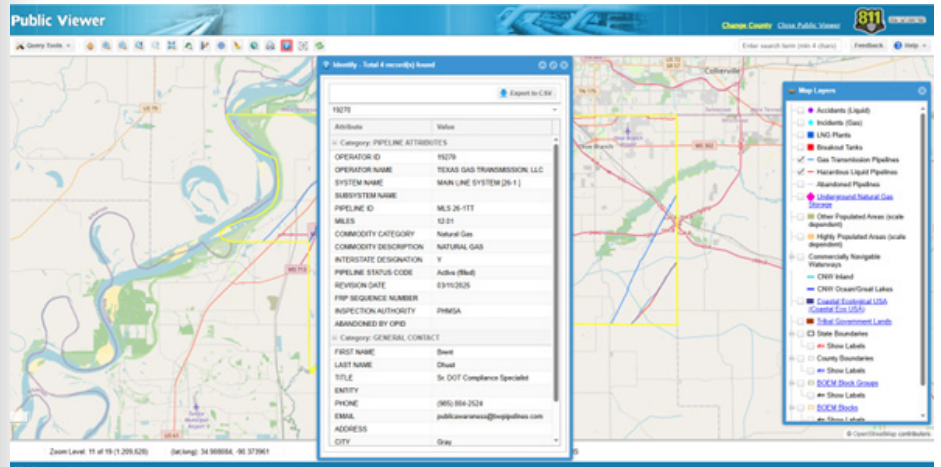
## Navigating the NPMS: A Step-by-Step Guide

The NPMS is open to the public through the **NPMS Public Map Viewer**. Here is how to use it effectively:

- 1. Access the Viewer:** Visit [www.npms.phmsa.dot.gov](http://www.npms.phmsa.dot.gov) and click on the “Public Map Viewer” link.
- 2. Select Your Location:** You can search by State and County. The system allows you to view data for one county at a time to ensure the map remains clear and readable.
- 3. Use the Zoom Tools:** Zoom in to your specific township or section. You can toggle between “Map” view and “Satellite” view—the satellite view is often best for farmers to identify specific fields and landmarks.
- 4. Identify the Pipe:** Once you see a pipeline (usually represented by a colored line), click on it using the “Identify” tool. A pop-up box will appear with the operator’s name, the product carried (e.g., Natural Gas, Crude Oil), and the operator’s contact information.
- 5. Print for Your Files:** You can generate a PDF map of your area. This is a great addition to your farm’s permanent records or for inclusion in a safety briefing for seasonal employees.

### The Perfect Workflow: Map, Plan, Then Contact

For the modern professional producer, the NPMS should be the first step in a three-part safety workflow:



### Step 1: Map (The NPMS Phase)

During the winter months or the planning phase of a project, sit down with the NPMS. Identify which pipelines are on your property. Note the operators and their contact numbers. If you are planning a major project like a new grain bin or a fence line, see if there is an obvious conflict.

### Step 2: Plan (The Consultation Phase)

If the NPMS shows a pipeline in your work area, call the operator using the number provided in the system. Talk to their land agent. Often, they can provide specialized maps of their right-of-way on your property and give you guidance on “encroachment” rules. They would much rather talk to you in the office than meet you in the field after a strike.

### Step 3: Contact (The 811 Phase)

At least **two to three business days** before you start the work, contact 811 (by phone or online). This is the law, and it is the only way to get high-accuracy, temporary paint or flags on the ground. Once the marks are down, respect the “Tolerance Zone” and dig with care.

### Summary for Ag Agents

As an Ag Agent, you are the bridge between the industry and the producer. When a farmer asks about the pipelines on their land, point them to the NPMS as a **discovery tool**. Use it to foster a culture of “Knowing What’s Below.”

By encouraging producers to use the NPMS for planning and 811 for digging, we can ensure the American farm remains a place of productivity, legacy, and, above all, safety.

# Potential Hazards Associated with Pipeline and Pipeline Facility Leaks

Originally published by the Pipeline Association for Public Awareness

## Natural Gas



- A gas that is colorless, odorless, lighter than air
- Flammable and easily ignited
- Will displace oxygen and can cause asphyxiation or dizziness
- May produce irritating and/or toxic gasses

## Petroleum Gas



- A gas that is colorless, odorless, tasteless, heavier than air
- Flammable and easily ignited
- Will displace oxygen and can cause asphyxiation or dizziness
- May cause burns, injury, frostbite
- May produce irritating and/or toxic gas

## Petroleum Liquids



- Liquids and vapors are heavier than air
- Flammable and easily ignited
- May cause burns, injury, frostbite
- May produce irritating and/or toxic gas
- Runoff may cause pollution

## Anhydrous Ammonia



- Colorless gas or liquids with pungent odor and heavier than air
- Will displace oxygen and can cause asphyxiation
- May cause burns, injury, frostbite
- Toxic and may be fatal
- Runoff may cause pollution

## Carbon Dioxide



- A heavy gas that is colorless, odorless, tasteless, and heavier than air
- Will displace oxygen and can cause asphyxiation and dizziness
- May cause burns, injury, frostbite

## Ethanol



- A colorless liquid that is heavier than air
- Flammable and easily ignited
- May cause burns, injury, frostbite
- May produce irritating and/or toxic gas
- Runoff may cause pollution

## Hydrogen Gas



- A gas that is colorless, odorless and lighter than air
- Flammable and easily ignited
- Will displace oxygen and can cause asphyxiation and dizziness
- May cause burns, injury, frostbite
- May produce irritating and/or toxic gasses

## Sour Crude Oil



- Corrosive contaminant found in crude oil that has an odor like the smell of rotten eggs or a burnt match and is heavier than air.
- Flammable and easily ignited
- Toxic and may be fatal
- Extremely irritating, toxic and corrosive
- Runoff may cause pollution

## Sour Gas



- Corrosive contaminant found in natural gas that has an odor like the smell of rotten eggs or a burnt match and is heavier than air.
- Flammable and easily ignited
- Will displace oxygen and can cause asphyxiation
- May cause burns, injury, frostbite
- Toxic and may be fatal
- Extremely irritating, toxic and corrosive
- Runoff may cause pollution



## Recognizing a Pipeline Leak

In the unlikely event of a pipeline leak, one or any combination of the items listed below can typically help you recognize a leak.



### You might see:

- Colored liquid on the ground
- Flames, if a leak has ignited
- Oily rainbow-like sheen on water surfaces
- Continuous bubbling in a wet area
- Discolored snow or vegetation in an otherwise green area
- A steam-like cloud or fog
- Unexpected frost buildup on the ground
- Dirt being blown or appearing to be thrown into the air



### You might hear:

- An unusual roaring, blowing or hissing sound



### You might smell:

- An unusual odor similar to diesel fuel, gasoline, sulfur or rotten egg

## Responding to a Pipeline Leak



- ✓ **First, leave the immediate area on foot!** Move in a crosswind direction away from the leak or vapor cloud and maintain a safe distance. Abandon any equipment being used in or near the area.
- ✓ **Then, go directly to a safe location and then call 911** and the pipeline operator's emergency number that is located on the nearest pipeline marker.
- ✓ **Warn others to stay away from the leak.**

- ✗ **Cause any open flame or other potential source of ignition** such as an electrical switch, vehicle ignition, lighting a match, ringing a doorbell, etc.
- ✗ **Come into direct contact** with any escaping liquids or gas.
- ✗ **Drive into a leak or vapor cloud** while leaving the area.
- ✗ **Attempt to operate any pipeline valves** yourself. You may inadvertently route more product to the leak or cause a secondary incident.
- ✗ **Attempt to extinguish a natural gas fire.**
- ✗ **Use telephones (including cell phones)** or anything that could cause a spark.
- ✗ **Use email, text or the internet to contact the company** about a leak, and never assume someone has reported the leak.

## Liaison with Farmers

Pipeline operators strive to educate farmers and share resources to prevent digging accidents.



# Pipeline Location Information

Originally published by the Pipeline Association for Public Awareness

## PIPELINE MARKERS



Originally published by the Pipeline Association for Public Awareness. Pipelines are buried in areas called rights-of-way. Pipeline markers are used to designate the general route of the pipeline. Markers can also be found where a pipeline crosses a street or railroad, emerges from the ground, or in waterways.

**BE AWARE:** Pipeline markers will not designate the exact location, depth or number of pipelines in the area. Markers come in different shapes and sizes, but will always:

Include the word **WARNING, DANGER OR CAUTION**

Identify the material being transported

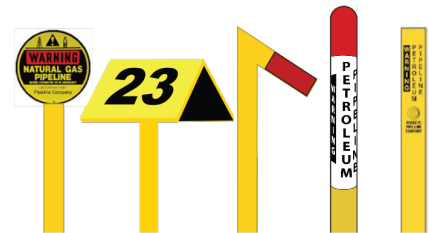
Provide a number to reach the company in event of an emergency

Provide the name of the pipeline company

**Gathering** pipelines are normally located in rural areas and transport crude oil or natural gas from wellheads and production facilities to processing facilities where the oil, gas and water are separated and processed.

**Transmission** pipelines move refined liquid products and natural gas from refineries to marketing and distribution terminals typically using larger diameter, high-pressure lines. The general location of all transmission pipelines can be viewed in the National Pipeline Mapping System at [www.npms.phmsa.dot.gov](http://www.npms.phmsa.dot.gov)

**Distribution** pipelines are normally located in populated areas and carry natural gas or propane from a transmission pipeline or storage facility directly to residential and industrial customers. Some companies have included the location of their pipelines in a mobile friendly web application called Pipelines Nearby, which can be accessed at [www.pipelinesnearby.org](http://www.pipelinesnearby.org)



## MARCADORES DE TUBERÍA



Las tuberías son enterradas en áreas llamadas derecho de paso (ROW por sus siglas en inglés). Los marcadores de tubería se usan para designar la ruta general de la tubería. Los marcadores también pueden ser encontrados donde una tubería cruza una calle o riel de tren, donde sale del suelo, o en vías navegables.

**ESTÉ CONSCIENTE:** Los marcadores no dan la ubicación exacta, profundidad ni número de tuberías en el área. Los marcadores vienen en diferentes formas y tamaños, pero siempre incluyen:

Incluye la palabra **WARNING, DANGER OR CAUTION** (aviso, peligro o precaución)

Identifica el material siendo transportado

Da el número de la compañía en case de emergencia


Da el nombre de la compañía de tubería


Tuberías **Recolectoras** están situadas en zonas rurales y transportan normalmente petróleo crudo o el gas natural de manantiales y de instalaciones de producción a centros de procesamiento donde se separan y se procesan aceite, gas y agua.

Las tuberías de **Transmisión** mueven productos y gas natural líquidos refinados desde refineries a terminales comerciales y de distribución típicamente usando líneas de alta presión con diámetro más grande. La ubicación general de todas las tuberías de transmisión se puede ver en el sistema de trazado nacional de tubería en [www.npms.phmsa.dot.gov](http://www.npms.phmsa.dot.gov)

Las tuberías de **Distribución** están situadas en áreas pobladas y llevan normalmente el gas natural o propano de una tubería de transmisión o instalación de almacenamiento directamente a clientes residenciales e industriales. Algunas compañías han incluido la ubicación de sus tuberías en una aplicación web móvil llamada Pipelines Nearby, que puede ser accedida en [www.pipelinesnearby.org](http://www.pipelinesnearby.org)



| Notification Center and State Law Directory<br>Informational purposes only. Information and laws are subject to change. Consult your local Notification Center website for updated information. ACTS Now, Inc attempted to verify all information as of publication date, and accepts no responsibility for missing or incorrect information.<br>Note: Voice tickets may also be another acceptable form of ticket submission.<br><br>You can reach your local Notification Center in the U.S. by dialing 811.<br> | TICKETS |        |        | STATE LAWS & PROVISIONS |                 |                  |                      |                          |                    |                   |                 | NOTIFICATION EXEMPTIONS |     |           |          | NOTIFICATIONS ACCEPTED |          |        |        | Tolerance Zone (either side of the utility plus the width of the utility) |           |          |                |  |
|---|---------|--------|--------|-------------------------|-----------------|------------------|----------------------|--------------------------|--------------------|-------------------|-----------------|-------------------------|-----|-----------|----------|------------------------|----------|--------|--------|---|-----------|----------|----------------|--|
|   | FAX     | Online | Mobile | Statewide Coverage      | Civil Penalties | Emergency Clause | Mandatory Membership | Excavator Permits Issued | Mandatory Premarks | Positive Response | Hand Dig Clause | Damage Reporting        | DOT | Homeowner | Railroad | Agriculture            | Depth    | Damage | Design |   | Emergency | Overhead | Large Projects |  |
| <b>ALABAMA / Alabama 811 / 800-292-8525</b><br>Website: al811.com<br>Hours: 24 hours, 7 days<br>Advance Notice: 2 full working days (not including day of notification)<br>Marks Valid: 20 working days<br>Law Link: al811.com/law  | N       | Y      | Y      | Y                       | Y               | Y                | Y                    | Y                        | N                  | Y                 | Y               | Y                       | Y   | N         | Y        | Y                      | 12"<br>* | Y      | Y      | Y   | N         | N        | 18"            |  |
| *Agricultural purposes only   |         |        |        |                         |                 |                  |                      |                          |                    |                   |                 |                         |     |           |          |                        |          |        |        |   |           |          |                |  |
| <b>ALASKA / Alaska Dig Line, Inc. / 800-478-3121 or 907-278-3121</b><br>Website: 811ak.com<br>Hours: 8:00 AM - 5:00 PM, M-F/Emergency 24/7<br>Advance Notice: 2-10 business days based on location<br>Marks Valid: 15-20 business days based on location<br>Law Link: 811ak.com/faq   | N       | Y      | Y      | Y                       | Y               | Y                | N                    | N                        | N                  | N                 | Y               | N                       | N   | N         | N        | Y                      | N        | Y      | Y      | Y   | N         | Y        | 24"            |  |
| *24-30" based on proposed depth of dig  |         |        |        |                         |                 |                  |                      |                          |                    |                   |                 |                         |     |           |          |                        |          |        |        |   |           |          |                |  |
| <b>ARIZONA / Arizona 811 / 800-782-5348</b><br>Website: arizona811.com<br>Hours: 6:00 AM - 5:00 PM, M-F<br>Advance Notice: 2 full working days(excludes weekends and holidays)<br>Marks Valid: 15 working days<br>Law Link: arizona811.com/resources/   | N       | Y      | Y      | Y                       | Y               | Y                | Y                    | N                        | N                  | Y                 | Y               | Y                       | N   | N         | N        | Y                      | N        | N      | Y      | Y   | N         | N        | 24"            |  |
| <b>ARKANSAS / Arkansas 811 / 800-482-8998</b><br>Website: arkansas811.com<br>Hours: 24 hours, 7 days<br>Advance Notice: 2 to 10 working days<br>Marks Valid: 20 working days<br>Law Link: arkonecall.com/statelaw/statelaw.aspx   | N       | Y      | Y      | Y                       | Y               | Y                | Y                    | N                        | Y                  | Y                 | Y               | N                       | N   | N         | N        | N                      | N        | N      | Y      | Y   | N         | Y        | 18"            |  |
| <b>CALIFORNIA</b>   |         |        |        |                         |                 |                  |                      |                          |                    |                   |                 |                         |     |           |          |                        |          |        |        |   |           |          |                |  |
| <b>Underground Service Alert of Northern CA &amp; NV USA North 811 / 800-642-2444</b><br>Website: usanorth811.org<br>Hours: 24 x 7<br>Advance Notice: 2 working days, not including the day of notification<br>Marks Valid: 28 days<br>Law Link: usanorth811.org (Quick Links / Law & Excavation Manual)  | N       | Y      | Y      | N                       | Y               | Y                | Y*                   | Y                        | Y                  | Y                 | Y               | Y                       | N   | Y         | N        | N                      | N        | Y      | N      | Y   | N         | Y        | 24"            |  |
| <b>Underground Service Alert of Southern California / 800-422-4133</b><br>Website: digalert.org<br>Hours: 6:00 AM - 7:00 PM, M-F<br>Advance Notice: 2 working days to 14 calendar days not including date of notice<br>Marks Valid: 28 days<br>Law Link: https://leginfo.ca.gov/faces/codes_displayText.xhtml?lawCode=GOV&division=5.&title=1.&part=&chapter=3.1.&article=2   | N       | Y      | Y      | N                       | Y               | Y                | Y*                   | Y                        | Y                  | Y                 | Y               | Y                       | N   | Y         | N        | N                      | N        | Y      | N      | Y   | N         | Y        | 24"            |  |
| *DOT and non-pressurized sewer lines, storm drains and drain lines exempt   |         |        |        |                         |                 |                  |                      |                          |                    |                   |                 |                         |     |           |          |                        |          |        |        |   |           |          |                |  |
| <b>COLORADO / Colorado 811 / 800-922-1987</b><br>Website: co811.org<br>Hours: 24 hours<br>Advance Notice: 2 days, not to include the day of notice<br>Marks Valid: 30 days<br>Law Link: https://ops.colorado.gov/sites/ops/files/2021-10/ud-safetycommissionstatutes101821.pdf  | N       | Y      | Y      | Y                       | Y               | Y                | Y                    | N                        | N                  | Y                 | N               | Y                       | N   | N         | Y        | Y                      | Y        | Y      | Y      | Y   | N         | Y        | 18"            |  |
| <b>CONNECTICUT / Call Before You Dig / 800-922-4455</b>   |         |        |        |                         |                 |                  |                      |                          |                    |                   |                 |                         |     |           |          |                        |          |        |        |   |           |          |                |  |
| <b>Website: www.cbyd.com</b><br>Hours: 7:00 AM - 5:00 PM, M-F; Emergencies 24 Hours<br>Advance Notice: 2 full working days up to 30 calendar days (excludes weekends, holidays and the day of notification)<br>Marks Valid: 30 days<br>Law Link: www.cbyd.com/resources/ct-cbyd-state-law-regulations#  | N       | Y      | Y      | Y                       | Y               | Y                | Y                    | N                        | Y                  | Y                 | Y               | Y                       | N   | N         | N        | Y                      | N        | Y      | Y      | Y   | N         | Y        | 18"            |  |
| <b>DELAWARE / Delmarva811 / 800-282-8555</b><br>Website: https://delmarva811.com/<br>Hours: 24 hours, 7 days<br>Advance Notice: 2 full business days<br>Marks Valid: must start within 10 calendar days, no expiration as long as marks still visible and scope does not change.<br>Law Link: delcode.delaware.gov/title26/c008/index.shtml   | N       | Y      | Y      | Y                       | Y               | Y                | Y                    | N                        | N                  | Y                 | Y               | Y                       | N   | Y*        | N        | N                      | N        | N      | Y      | Y   | N         | N        | 24"            |  |
| <b>FLORIDA / Sunshine 811 / 800-432-4770</b><br>Website: sunshine811.com<br>Hours: 7:00 AM - 6:00 PM<br>Advance Notice: 2 full business days (10 if dig site is underwater)<br>Marks Valid: 30 days<br>Law Link: sunshine811.com/law  | N       | Y      | Y      | Y                       | Y               | Y                | Y                    | N                        | Y                  | Y                 | Y               | Y                       | Y   | Y         | Y        | Y                      | Y        | N      | Y      | Y   | N         | N        | 24"            |  |

| Notification Center and State Law Directory<br>HELP US STAY UP TO DATE.<br>Directory information is also available online at <a href="http://actsnowinc.com">actsnowinc.com</a> . Report any updates to this directory by calling 501-548-6363.<br><br>Note: Voice tickets may also be another acceptable form of ticket submission.<br><br>You can reach your local Notification Center in the U.S. by dialing 811.  | TICKETS |        |        | STATE LAWS & PROVISIONS |                 |                  |                      |                          |                    |                   |                 | NOTIFICATION EXEMPTIONS |     |           |          | NOTIFICATIONS ACCEPTED |       |        |        | Tolerance Zone (either side of the utility plus the width of the utility) |           |          |                |  |
|--|---------|--------|--------|-------------------------|-----------------|------------------|----------------------|--------------------------|--------------------|-------------------|-----------------|-------------------------|-----|-----------|----------|------------------------|-------|--------|--------|---|-----------|----------|----------------|--|
|  | FAX     | Online | Mobile | Statewide Coverage      | Civil Penalties | Emergency Clause | Mandatory Membership | Excavator Permits Issued | Mandatory Premarks | Positive Response | Hand Dig Clause | Damage Reporting        | DOT | Homeowner | Railroad | Agriculture            | Depth | Damage | Design |   | Emergency | Overhead | Large Projects |  |
| <b>GEORGIA / Georgia 811 / 800-282-7411</b><br>Website: <a href="http://Georgia811.com">Georgia811.com</a><br>Hours: 7:00 AM - 6:00 PM, M-F • (24/7 emergency)<br>Advance Notice: 2 business days (excluding day of call)<br>Marks Valid: 30 calendar days<br>Law Link: <a href="http://georgia811.com/index.php/laws-policies/">georgia811.com/index.php/laws-policies/</a>   | N       | Y      | Y      | Y                       | Y               | Y                | N                    | Y                        | Y                  | Y                 | Y               | N*                      | N   | N         | N**      | N                      | Y     | Y      | Y      | Y   | Y         | Y        | 18"            |  |
| * Routine road maintenance<br>** Farming activities  |         |        |        |                         |                 |                  |                      |                          |                    |                   |                 |                         |     |           |          |                        |       |        |        |   |           |          |                |  |
| <b>HAWAII / Hawaii One Call Center / 866-423-7287 / Tickets Fax: 877-695-2466</b><br>Website: <a href="http://callbeforeyoudig.org">callbeforeyoudig.org</a><br>Hours: 24 hours, 7 days<br>Advance Notice: 5 working days, not to exceed 28 calendar days<br>Marks Valid: 28 calendar days<br>Law Link: <a href="http://callbeforeyoudig.org/law.htm">callbeforeyoudig.org/law.htm</a>   | Y       | Y      | N      | Y                       | Y               | Y                | N                    | Y                        | Y                  | Y                 | N               | N                       | Y   | N         | N        | N                      | Y     | Y      | Y      | N   | N         | N        | 30"            |  |
| <b>IDAHO</b>   |         |        |        |                         |                 |                  |                      |                          |                    |                   |                 |                         |     |           |          |                        |       |        |        |   |           |          |                |  |
| <b>DIG LINE / 800-342-1585</b><br>Website: <a href="http://digline.com">digline.com</a><br>Hours: 24 hours, 7 days<br>Advance Notice: 2 business days<br>Marks Valid: 28 Days<br>Law Link: <a href="https://legislature.idaho.gov/statutesrules/dstat/title55/T55CH22/">https://legislature.idaho.gov/statutesrules/dstat/title55/T55CH22/</a>   | N       | Y      | Y      | N                       | Y               | Y                | Y                    | N                        | Y                  | N                 | Y               | Y                       | N   | N         | N        | Y                      | 15"   | Y      | Y      | Y   | Y         | Y        | 24"            |  |
| <b>BONNER/BOUNDARY / 800-428-4950</b><br>Website: <a href="http://digsafedaho811.com">digsafedaho811.com</a><br>Hours: 24 hours, 7 days<br>Advance Notice: 2 business days<br>Marks Valid: 28 days<br>Law Link: <a href="https://legislature.idaho.gov/statutesrules/idstat/title55/T55CH22/">https://legislature.idaho.gov/statutesrules/idstat/title55/T55CH22/</a>  | N       | Y      | Y      | N                       | Y               | Y                | Y                    | N                        | Y                  | N                 | Y               | Y                       | N   | N         | N        | Y                      | 15"   | Y      | Y      | Y   | Y         | N        | 24"            |  |
| <b>SHOSHONE/BENEWAH / 866-242-5844</b><br>Website: <a href="http://nid811.com">nid811.com</a><br>Hours: 24 hours, 7 days<br>Advance Notice: 2 business days<br>Marks Valid: 28 days<br>Law Link: <a href="https://legislature.idaho.gov/statutesrules/dstat/Title55/T55CH22/">https://legislature.idaho.gov/statutesrules/dstat/Title55/T55CH22/</a>   | N       | Y      | Y      | N                       | Y               | Y                | Y                    | N                        | Y                  | N                 | Y               | Y                       | N   | N         | N        | Y                      | 15"   | Y      | Y      | Y   | Y         | N        | 24"            |  |
| <b>KOOTENAI COUNTY / 800-428-4950</b><br>Website: <a href="http://digsafenorthidaho811.com">digsafenorthidaho811.com</a><br>Hours: 24 hours, 7 days<br>Advance Notice: 2 business days<br>Marks Valid: 28 days<br>Law Link: <a href="https://legislature.idaho.gov/statutesrules/dstat/Title55/T55CH22/">https://legislature.idaho.gov/statutesrules/dstat/Title55/T55CH22/</a>  | N       | Y      | Y      | N                       | Y               | Y                | Y                    | N                        | Y                  | N                 | Y               | Y                       | N   | N         | N        | Y                      | 15"   | Y      | Y      | Y   | N         | Y        | 24"            |  |
| <b>ILLINOIS</b>  |         |        |        |                         |                 |                  |                      |                          |                    |                   |                 |                         |     |           |          |                        |       |        |        |   |           |          |                |  |
| <b>JULIE, INC. / 800-892-0123</b><br>Website: <a href="http://illinois1call.com">illinois1call.com</a> • Hours: 24 hours, 7 days<br>Advance Notice: 48 hours notice (two business days), but no more than a 14 calendar day advance notice prior to the start of excavation.<br>Marks Valid: 28 calendar days<br>Law Link: <a href="https://illinois1call.com/lawand-enforcement/">https://illinois1call.com/lawand-enforcement/</a>   | N       | Y      | N      | N                       | Y               | Y                | Y                    | N                        | Y*                 | Y                 | Y               | Y                       | N   | N         | Y        | Y                      | N     | Y      | Y      | Y   | N         | N        | 18"            |  |
| <b>811 CHICAGO / 312-744-7000</b><br>Website: <a href="http://ipi.cityofchicago.org/Digger">ipi.cityofchicago.org/Digger</a><br>Hours: 24 hours a day, 7 days a week<br>Advance Notice: 48 hours • Marks Valid: 28 days<br>Law Link: <a href="https://codelibrary.amlegal.com/codes/chicago/latest/chicago_il/0-0-0-2651040">https://codelibrary.amlegal.com/codes/chicago/latest/chicago_il/0-0-0-2651040</a>   | N       | Y      | N      | N                       | Y               | Y                | Y                    | Y                        | Y*                 | Y                 | Y               | Y                       | N   | N         | Y        | Y                      | N     | Y      | N      | Y   | N         | N        | 18"            |  |
| *When possible   |         |        |        |                         |                 |                  |                      |                          |                    |                   |                 |                         |     |           |          |                        |       |        |        |   |           |          |                |  |
| <b>INDIANA / Indiana 811 / 800-382-5544</b><br>Website: <a href="http://indiana811.org">indiana811.org</a> • Hours: 24 hours, 365 days<br>Advance Notice: 48 hours notice (two working days), but no more than a 20-calendar day advance notice prior to the start of excavation.<br>Marks Valid: 20 calendar days<br>Law Link: <a href="http://indiana811.org/wp-content/uploads/2019/06/IC-8-1-26-1.pdf">indiana811.org/wp-content/uploads/2019/06/IC-8-1-26-1.pdf</a>                               | N       | Y      | Y      | Y                       | Y               | Y                | Y                    | N                        | N                  | Y                 | Y               | Y                       | N   | N         | Y        | Y                      | N     | Y      | Y      | Y   | N         | N        | 24"            |  |
| <b>IOWA / Iowa One Call / 800-292-8989</b><br>Website: <a href="http://iowaonecall.com">iowaonecall.com</a> • Hours: 24 hours, 7 days<br>Advance Notice: 48 hours, excluding the day of notice, Saturdays, Sundays, and legal holidays<br>Marks Valid: 25 calendar days<br>Law Link: <a href="http://iowaonecall.com/Default.aspx?tabid=404#iowa">iowaonecall.com/Default.aspx?tabid=404#iowa</a>  | N       | Y      | Y      | Y                       | Y               | Y                | Y                    | N                        | Y                  | Y                 | Y               | Y                       | N   | N         | N        | Y*                     | N     | Y      | Y      | Y   | N         | Y        | 18"            |  |
| *Normal farm operations less than fifteen inches   |         |        |        |                         |                 |                  |                      |                          |                    |                   |                 |                         |     |           |          |                        |       |        |        |   |           |          |                |  |




## Know what's below. Call before you dig.

Expand public awareness by visiting [811BeforeYouDig.com](http://811BeforeYouDig.com). You will find a variety of downloadable elements available for use free in your company/organization's existing campaigns.

Note: Voice tickets may also be another acceptable form of ticket submission.



|   | TICKETS |        |        | STATE LAWS & PROVISIONS |                 |                  |                      |                          |                    |                   |                 | NOTIFICATION EXEMPTIONS |      |           |          | NOTIFICATIONS ACCEPTED |       |        |        | Tolerance Zone (either side of the utility plus the width of the utility) |           |          |                |
|---|---------|--------|--------|-------------------------|-----------------|------------------|----------------------|--------------------------|--------------------|-------------------|-----------------|-------------------------|------|-----------|----------|------------------------|-------|--------|--------|---|-----------|----------|----------------|
|   | FAX     | Online | Mobile | Statewide Coverage      | Civil Penalties | Emergency Clause | Mandatory Membership | Excavator Permits Issued | Mandatory Premarks | Positive Response | Hand Dig Clause | Damage Reporting        | DOT  | Homeowner | Railroad | Agriculture            | Depth | Damage | Design |   | Emergency | Overhead | Large Projects |
| <b>KANSAS / Kansas 811 / 800-344-7233</b>   |         |        |        |                         |                 |                  |                      |                          |                    |                   |                 |                         |      |           |          |                        |       |        |        |   |           |          |                |
| Website: <a href="http://kansas811.com">kansas811.com</a><br>Hours: 24 hours, 7 days<br>Advance Notice: 2 full working days(not including day of notice)<br>Marks Valid: 20 calendar days<br>Law Link: <a href="http://kansas811.com">kansas811.com</a> (Resources/Other Helpful Links)   | N       | Y      | Y      | Y                       | Y               | Y                | Y                    | N                        | N*                 | Y                 | N               | Y                       | N    | Y*        | Y        | Y                      | N     | Y      | N      | Y   | N         | N        | 24"            |
| *Homeowner retains responsibility for any damages due to digging  |         |        |        |                         |                 |                  |                      |                          |                    |                   |                 |                         |      |           |          |                        |       |        |        |   |           |          |                |
| <b>KENTUCKY / Kentucky 811 / 800-752-6007</b>   |         |        |        |                         |                 |                  |                      |                          |                    |                   |                 |                         |      |           |          |                        |       |        |        |   |           |          |                |
| Website: <a href="http://kentucky811.org">kentucky811.org</a><br>Hours: 24 hours/7 days<br>Advance Notice: 2 working days<br>Marks Valid: 21 calendar days<br>Law Link: <a href="http://kentucky811.org/the-dig-law">kentucky811.org/the-dig-law</a>  | N       | Y      | Y      | Y                       | Y               | Y                | N                    | N                        | N*                 | Y*                | Y               | Y**                     | Y*** | N         | Y        | Y                      | N***  | Y      | Y      | Y   | N         | Y        | 24"            |
| <small>*Unless requested by a facility operator KRS367.4911(11)<br/> **Only gas or PHMSA-regulated facilities have mandatory damage reporting to the state regulator. Damage reporting to the affected facility is required. Damage reporting to the call center is not required.<br/> ***Exempt from calling for routine road maintenance (defined in KRS 367.4903(10)) as preservation, including road repairs and resurfacing, and replacement of signs, posts, and guardrails at the exact same location when no additional penetration of existing grade is necessary, but does not include road construction, installation of signs, posts, and guardrails, or any activity that requires penetration of existing grade.<br/> ****Specific exemption exists for connection or disconnection of communications lines when non-intrusive excavation is used to a depth less than 12 inches KRS 367.4915(12)</small> |         |        |        |                         |                 |                  |                      |                          |                    |                   |                 |                         |      |           |          |                        |       |        |        |   |           |          |                |
| <b>LOUISIANA / Louisiana 811 / 800-272-3020</b>   |         |        |        |                         |                 |                  |                      |                          |                    |                   |                 |                         |      |           |          |                        |       |        |        |   |           |          |                |
| Website: <a href="http://louisiana811.com">louisiana811.com</a><br>Hours: 7:00 AM - 6:00 PM, Emergency Locates 24/7<br>Advance Notice: 2 Business Days<br>Marks Valid: 20 Days/30 Days for Agriculture, Forestry, Marine<br>Law Link: <a href="https://www.louisiana811.com/dig-law/">https://www.louisiana811.com/dig-law/</a>   | N       | Y      | Y      | Y                       | Y               | Y                | N                    | N                        | Y                  | Y                 | N               | N                       | N    | Y         | N        | Y                      | N     | Y      | Y      | Y   | N         | Y        | 18"            |
| <b>MAINE / Dig Safe System, Inc. / 888-344-7233</b>   |         |        |        |                         |                 |                  |                      |                          |                    |                   |                 |                         |      |           |          |                        |       |        |        |   |           |          |                |
| Website: <a href="http://digsafe.com">digsafe.com</a><br>Hours: 24 hours, 7 days<br>Advance Notice: 72 hours(excluding weekends and holidays)<br>Marks Valid: 60 days; must start within 30 days<br>Law Link: <a href="http://www.digsafe.com/laws_rules.php">http://www.digsafe.com/laws_rules.php</a>   | N       | Y      | Y      | Y                       | Y               | Y                | Y                    | Y                        | Y                  | Y                 | Y               | Y                       | N    | N         | N        | Y                      | N     | Y      | N      | Y   | N         | Y        | 18"            |
| <b>MARYLAND / Miss Utility (Western Shore) / 800-257-7777</b>   |         |        |        |                         |                 |                  |                      |                          |                    |                   |                 |                         |      |           |          |                        |       |        |        |   |           |          |                |
| Website: <a href="http://www.missutility.net">www.missutility.net</a><br>Hours: 24 hours, 7 days<br>Advance Notice: 2 full business days<br>Marks Valid: 12 business days<br>Law Link: <a href="http://www.missutility.net/maryland/">www.missutility.net/maryland/</a>   | N       | Y      | Y      | Y                       | Y               | Y                | Y                    | N                        | N                  | Y                 | Y               | N                       | N    | Y*        | N        | N                      | N     | N      | Y      | Y   | N         | N        | 18"            |
| *Hand dig only up to a depth of 6". Mechanized equipment must call.   |         |        |        |                         |                 |                  |                      |                          |                    |                   |                 |                         |      |           |          |                        |       |        |        |   |           |          |                |
| <b>Delmarva811 (Eastern Shore) / 800-441-8355</b>   |         |        |        |                         |                 |                  |                      |                          |                    |                   |                 |                         |      |           |          |                        |       |        |        |   |           |          |                |
| Website: <a href="http://missutilitydelmarva.com">missutilitydelmarva.com</a><br>Hours: 24 hours, 7 days<br>Advance Notice: 2 full business days<br>Marks Valid: 12 business days<br>Law Link: <a href="https://delmarva811.com/">https://delmarva811.com/</a>  | N       | Y      | Y      | Y                       | Y               | Y                | Y                    | N                        | N                  | Y                 | Y               | N                       | N    | Y*        | Y        | N                      | N     | N      | Y      | Y   | N         | N        | 18"            |
| *Hand dig only up to a depth of 6". Mechanized equipment must call.   |         |        |        |                         |                 |                  |                      |                          |                    |                   |                 |                         |      |           |          |                        |       |        |        |   |           |          |                |
| <b>MASSACHUSETTS / Dig Safe System, Inc. / 888-344-7233</b>   |         |        |        |                         |                 |                  |                      |                          |                    |                   |                 |                         |      |           |          |                        |       |        |        |   |           |          |                |
| Website: <a href="http://digsafe.com">digsafe.com</a><br>Hours: 24 hours, 7 days<br>Advance Notice: 72 hours(excluding weekends and holidays)<br>Marks Valid: 30 days<br>Law Link: <a href="http://digsafe.com/laws_rules.php">digsafe.com/laws_rules.php</a>   | N       | Y      | Y      | Y                       | Y               | Y                | Y                    | Y                        | Y                  | Y                 | Y               | Y                       | N    | N         | N        | Y                      | N     | Y      | N      | Y   | N         | Y        | 18"            |
| <b>MICHIGAN / Miss Dig System, Inc. / 800-482-7171</b>  |         |        |        |                         |                 |                  |                      |                          |                    |                   |                 |                         |      |           |          |                        |       |        |        |   |           |          |                |
| Website: <a href="http://missdig811.org">missdig811.org</a><br>Hours: 24 hours<br>Advance Notice: 3 business days(excluding weekends and holidays)<br>Marks Valid: 3 weeks to 6 months<br>Law Link: <a href="http://missdig811.org/education/public-act-174.html">missdig811.org/education/public-act-174.html</a>  | N       | Y      | Y      | Y                       | Y               | Y                | Y                    | N                        | N                  | Y                 | Y               | Y                       | Y    | N         | N        | N                      | N     | N      | Y      | Y   | N         | Y        | 18"            |
| <b>MINNESOTA / Gopher State One Call / 800-252-1166 or 651-454-0002</b>   |         |        |        |                         |                 |                  |                      |                          |                    |                   |                 |                         |      |           |          |                        |       |        |        |   |           |          |                |
| Website: <a href="http://gopherstateonecall.org">gopherstateonecall.org</a><br>Hours: 24 hours<br>Advance Notice: 48 hours(excluding weekends and holidays)<br>Marks Valid: 14 days<br>Law Link: <a href="http://revisor.leg.state.mn.us/statutes/?id=216D">revisor.leg.state.mn.us/statutes/?id=216D</a>   | N       | Y      | Y      | Y                       | Y               | Y                | Y                    | N                        | Y                  | Y                 | Y               | N                       | N    | N         | N        | Y                      | N     | N      | Y      | Y   | N         | Y        | 24"            |
| <b>MISSISSIPPI / Mississippi 811, Inc. / 800-227-6477 / Tickets Fax: 601-362-7533</b>   |         |        |        |                         |                 |                  |                      |                          |                    |                   |                 |                         |      |           |          |                        |       |        |        |   |           |          |                |
| Website: <a href="http://ms811.org">ms811.org</a><br>Hours: 24 hours, 7 days<br>Advance Notice: 3 working days<br>Marks Valid: 20 working days<br>Law Link: <a href="http://mstcall.org/One-Call-law">mstcall.org/One-Call-law</a>  | Y       | Y      | Y      | Y                       | Y               | Y                | Y                    | N                        | N                  | Y                 | Y               | Y                       | N    | Y         | Y        | 24"                    | 12"   | Y      | Y      | Y   | N         | Y        | 18"            |
| *Less than 16"  |         |        |        |                         |                 |                  |                      |                          |                    |                   |                 |                         |      |           |          |                        |       |        |        |   |           |          |                |
| <b>MISSOURI / Missouri 811/ 811</b>   |         |        |        |                         |                 |                  |                      |                          |                    |                   |                 |                         |      |           |          |                        |       |        |        |   |           |          |                |
| Website: <a href="http://www.missouri-811.org">www.missouri-811.org</a><br>Hours: 24 hours, 7 days<br>Advance Notice: 2 working days, not counting day of request<br>Marks Valid: 21 calendar days<br>Law Link: <a href="http://www.missouri-811.org/law">www.missouri-811.org/law</a>  | N       | Y      | Y      | Y                       | Y               | Y                | Y                    | N                        | N                  | Y                 | Y               | Y                       | N    | N         | Y        | Y*                     | N     | Y      | Y      | Y   | N         | N        | 24"            |

| Notification Center and State Law Directory<br>Informational purposes only. Information and laws are subject to change. Contact your local Notification Center website for updated information. ACTS Now, Inc attempted to verify all information as of publication date, and accepts no responsibility for missing or incorrect information.<br><br>Note: Voice tickets may also be another acceptable form of ticket submission.<br>You can reach your local Notification Center in the U.S. by dialing 811.  | TICKETS |        |        | STATE LAWS & PROVISIONS |                 |                  |                      |                          |                   |                   |                 | NOTIFICATION EXEMPTIONS |     |           |          | NOTIFICATIONS ACCEPTED |       |        |        | Tolerance Zone (either side of the utility plus the width of the utility) |           |          |                |  |
|--|---------|--------|--------|-------------------------|-----------------|------------------|----------------------|--------------------------|-------------------|-------------------|-----------------|-------------------------|-----|-----------|----------|------------------------|-------|--------|--------|---|-----------|----------|----------------|--|
|  | FAX     | Online | Mobile | Statewide Coverage      | Civil Penalties | Emergency Clause | Mandatory Membership | Excavator Permits Issued | Mandatory Remarks | Positive Response | Hand Dig Clause | Damage Reporting        | DOT | Homeowner | Railroad | Agriculture            | Depth | Damage | Design |   | Emergency | Overhead | Large Projects |  |
| <b>MONTANA/MONTANA 811/800-424-5555</b><br><br>Website: montana811.org<br>Hours: 24 hours, 365 days<br>Advance Notice: 2 business days<br>Marks Valid: 30 days<br>Law Link: montana811.org/montana-dig-law.html  | N       | Y      | Y      | Y                       | Y               | Y                | Y                    | N                        | N                 | Y                 | Y               | Y                       | N   | Y*        | N        | Y                      | Y     | Y      | Y      | Y   | N         | N        | 18"            |  |
| *Only under certain circumstances  |         |        |        |                         |                 |                  |                      |                          |                   |                   |                 |                         |     |           |          |                        |       |        |        |   |           |          |                |  |
| <b>NEBRASKA / Nebraska811 / 800-331-5666</b><br><br>Website: ne1call.com<br>Hours: 24 hours, 365 days<br>Advance Notice: 2 to 10 business days excluding holidays and weekends<br>Marks Valid: 17 Days<br>Law Link: ne1call.com/ne-law-enforcement/nebraska-statutes/  | Y       | Y      | Y      | Y                       | Y               | Y                | Y                    | N                        | N                 | Y                 | Y               | Y                       | N   | N         | Y        | Y                      | N     | Y      | Y      | Y   | N         | N        | 18"            |  |
| <b>NEVADA / USA North 811 / 800-642-2444</b><br><br>Underground Service Alert of Northern CA & NV<br>Website: www.usanorth811.org<br>Hours: 24/7<br>Advance Notice: 2 working days, not including the date of notification<br>Marks Valid: 28 days<br>Law Link: usanorth811.org (Quick Links/Law & Excavation Manual)  | N       | Y      | Y      | Y                       | Y               | Y                | Y                    | Y                        | Y                 | Y                 | Y               | N                       | N   | N         | N        | N                      | Y     | N      | Y      | N   | N         | N        | 24"            |  |
| <b>NEW HAMPSHIRE / Dig Safe System, Inc. / 888-344-7233</b><br><br>Website: digsafe.com<br>Hours: 24 hours, 7 days<br>Advance Notice: 72 hours(excluding weekends and holidays)<br>Marks Valid: 30 days<br>Law Link: digsafe.com/laws_rules.php  | N       | Y      | Y      | Y                       | Y               | Y                | Y                    | Y                        | Y                 | Y                 | Y               | N                       | N   | N         | Y        | N                      | Y     | N      | Y      | N   | Y         | N        | 18"            |  |
| <b>NEW JERSEY / New Jersey One Call / 800-272-1000 / Tickets Fax: 800-705-4559</b><br><br>Website: nj1-call.org<br>Hours: 24 hours<br>Advance Notice: 3 full business days<br>Marks Valid: 45 business days<br>Law Link: nj1-call.org/nj-law/  | Y       | Y      | Y      | Y                       | Y               | Y                | Y                    | N                        | N                 | Y                 | Y               | Y                       | N   | Y         | N        | Y                      | Y     | Y      | N      | Y   | N         | N        | 24"            |  |
| <b>NEW MEXICO / New Mexico One Call, Inc. dba NM811 / 800-321-2537 / Tickets Fax: 800-727-8809</b><br><br>Website: nm811.org<br>Hours: 7:00 AM - 5:00 PM, M-F / Emergencies & Damages: 24 hours<br>Advance Notice: 2 working days, not including the day of the notification<br>Marks Valid: 15 Days<br>Law Link: nm811.org/new-mexico-811-law/  | N       | Y      | Y      | Y                       | Y               | Y                | Y                    | N                        | Y                 | Y                 | Y               | Y                       | N   | N         | N        | N                      | N     | Y      | Y      | Y   | N         | Y        | 18"            |  |
| <b>NEW YORK</b>  |         |        |        |                         |                 |                  |                      |                          |                   |                   |                 |                         |     |           |          |                        |       |        |        |   |           |          |                |  |
| <b>UDig NY/811 or 800-962-7962</b><br>Website: UDigNY.org<br>Hours: 24/7/365<br>Advance Notice: 2 to 10 working days (excluding day of call)<br>Marks Valid: Valid as long as excavator maintains marks<br>Law Link: UDigNY.org/law  | N       | Y      | N      | N                       | Y               | Y                | Y                    | N                        | N                 | Y                 | Y               | N                       | N   | N         | N        | N                      | N     | Y      | Y      | Y   | N         | N        | 24"            |  |
| <b>NEW YORK 811 / 800-272-4480</b><br>Website: newyork-811.com<br>Hours: 24 hours, 7 days<br>Advance Notice: 2 to 10 business days<br>Marks Valid: 10 working days<br>Law Link: newyork-811.com/excavators/code-753-at-a-glance  | N       | Y      | Y      | N                       | Y               | Y                | Y                    | N                        | N                 | Y                 | Y               | N                       | N   | N         | N        | N                      | Y     | Y      | Y      | N   | N         | N        | 24"            |  |
| <b>NORTH CAROLINA / North Carolina One Call Center, Inc. / 800-632-4949</b><br><br>Website: nc811.org<br>Hours: 24 hours, 365 days<br>Advance Notice: 3 full working days<br>Marks Valid: 15 working days<br>Law Link: nc811.org/north-carolina-law.html   | N       | Y      | Y      | Y                       | Y               | Y                | Y                    | N                        | Y                 | Y                 | Y               | Y                       | N   | Y         | Y        | Y                      | N     | Y      | Y      | Y   | N         | N        | 24"            |  |



**Know what's below.  
Call before you dig.**

You can also reach your local Notification Center by dialing 811 anywhere in the United States. This is a FREE call and a FREE service.

Note: Voice tickets may also be another acceptable form of ticket submission.



| TICKETS |        |        | STATE LAWS & PROVISIONS |                 |                  |                      |                          |                    |                   |                 |                  |     | NOTIFICATION EXEMPTIONS |          |             |       | NOTIFICATIONS ACCEPTED |        |           |          | Tolerance Zone (either side of the utility plus the width of the utility) |
|---------|--------|--------|-------------------------|-----------------|------------------|----------------------|--------------------------|--------------------|-------------------|-----------------|------------------|-----|-------------------------|----------|-------------|-------|------------------------|--------|-----------|----------|---|
| FAX     | Online | Mobile | Statewide Coverage      | Civil Penalties | Emergency Clause | Mandatory Membership | Excavator Permits Issued | Mandatory Premarks | Positive Response | Hand Dig Clause | Damage Reporting | DOT | Homeowner               | Railroad | Agriculture | Depth | Damage                 | Design | Emergency | Overhead |   |

**NORTH DAKOTA / North Dakota One Call / 800-795-0555**

**Website:** ndonecall.com  
**Hours:** 24 hours  
**Advance Notice:** 2 Full Business Days  
**Marks Valid:** 21 calendar days  
**Law Link:** legis.nd.gov/cencode/149c23.pdf?20130530105605

|   |   |   |   |   |   |   |   |   |   |   |   |   |   |   |   |   |   |   |   |   |   |     |
|---|---|---|---|---|---|---|---|---|---|---|---|---|---|---|---|---|---|---|---|---|---|-----|
| N | Y | Y | Y | Y | Y | Y | N | Y | Y | Y | N | N | N | Y | N | N | Y | Y | Y | N | N | 24" |
|---|---|---|---|---|---|---|---|---|---|---|---|---|---|---|---|---|---|---|---|---|---|-----|

**OHIO / OHIO811 / 800-362-2764**

**Website:** OHIO811.org  
**Hours:** 24 hours, 7 days  
**Advance Notice:** 48 hours but not more than 10 working days  
**Marks Valid:** As long as visible and work begins within 10 days of original ticket  
**Law Link:** oups.org/law

|   |   |   |   |   |   |   |   |   |   |   |   |   |   |   |   |   |   |   |   |   |     |
|---|---|---|---|---|---|---|---|---|---|---|---|---|---|---|---|---|---|---|---|---|-----|
| N | Y | Y | Y | Y | Y | Y | N | Y | Y | Y | N | N | N | Y | N | Y | Y | Y | N | Y | 18" |
|---|---|---|---|---|---|---|---|---|---|---|---|---|---|---|---|---|---|---|---|---|-----|

**OKLAHOMA / OKIE811 / 800-522-6543**

**Website:** okie811.org  
**Hours:** 24 hours, 7 days  
**Advance Notice:** 48 hours excluding date of notification, weekends and legal holidays  
**Marks Valid:** 14 calendar days  
**Law Link:** okie811.org/thelaw

|   |   |   |   |   |   |   |   |   |   |   |   |   |   |   |    |   |   |   |   |   |     |
|---|---|---|---|---|---|---|---|---|---|---|---|---|---|---|----|---|---|---|---|---|-----|
| N | Y | Y | Y | N | Y | Y | N | N | Y | Y | Y | N | N | Y | N* | Y | Y | Y | N | Y | 24" |
|---|---|---|---|---|---|---|---|---|---|---|---|---|---|---|----|---|---|---|---|---|-----|

\*Excluding the burying of communications lines of a communications provider up to 12" deep within 12" surrounding their pedestals.

**OREGON / Oregon Utility Notification Center / 800-332-2344 / Tickets Fax: 503-293-0826**

**Website:** digsafelyoregon.com  
**Hours:** 24 hours, 7 days  
**Advance Notice:** 2 Full Business Days  
**Marks Valid:** 30 days  
**Law Link:** https://digsafelyoregon.com/resources/forms/

|   |   |   |   |   |   |   |   |   |   |   |   |     |   |   |   |   |   |   |   |   |     |
|---|---|---|---|---|---|---|---|---|---|---|---|-----|---|---|---|---|---|---|---|---|-----|
| Y | Y | Y | Y | Y | Y | N | Y | Y | Y | N | N | 12" | N | Y | N | N | Y | Y | N | N | 24" |
|---|---|---|---|---|---|---|---|---|---|---|---|-----|---|---|---|---|---|---|---|---|-----|

\*Excluding the burying of communications lines of a communications provider up to 12" deep within 12" surrounding their pedestals.

**PENNSYLVANIA / Pennsylvania One Call System, Inc. / 800-242-1776**

**Website:** pa1call.org  
**Hours:** 24 hours, 7 days  
**Advance Notice:** 3 to 10 business days (construction), 10-90 days (design), at least 10 days (large projects)  
**Marks Valid:** as long as equipment is on site  
**Law Link:** pa1call.org/palaw

|   |   |   |   |   |     |   |   |   |   |   |    |   |   |   |   |   |   |   |   |      |     |
|---|---|---|---|---|-----|---|---|---|---|---|----|---|---|---|---|---|---|---|---|------|-----|
| N | Y | Y | Y | Y | Y** | N | Y | Y | Y | Y | N* | N | N | Y | N | Y | Y | Y | N | Y*** | 18" |
|---|---|---|---|---|-----|---|---|---|---|---|----|---|---|---|---|---|---|---|---|------|-----|

\* PennDot minor routine maintenance exempt if without 24" depth from highest spot in ROW  
 \* Municipal Roads - minor routine maintenance if within 18" depth from highest point in ROW  
 \*\* Exemptions include PennDOT within state road DOT, Stripper Well Lines in Class 1 areas  
 \*\*\* Large projects accepted online only

**RHODE ISLAND / Dig Safe System, Inc. / 888-344-7233**

**Website:** digsafe.com  
**Hours:** 24 hours, 7 days  
**Advance Notice:** 72 hours(excluding weekends and holidays)  
**Marks Valid:** Must start within 30 days, as long as marks maintained  
**Law Link:** digsafe.com/laws\_rules.php

|   |   |   |   |   |   |   |   |   |   |   |   |   |   |   |   |   |   |   |   |   |   |     |
|---|---|---|---|---|---|---|---|---|---|---|---|---|---|---|---|---|---|---|---|---|---|-----|
| N | Y | Y | Y | Y | Y | Y | Y | Y | N | Y | Y | N | N | N | Y | N | Y | N | Y | N | Y | 18" |
|---|---|---|---|---|---|---|---|---|---|---|---|---|---|---|---|---|---|---|---|---|---|-----|

**SOUTH CAROLINA / South Carolina 811 / 888-721-7877**

**Website:** sc811.com  
**Hours:** 7:30 AM - 5:30 PM, M-F  
**Advance Notice:** 3 to 12 full working days notice(10-20 full working days notice subaqueous)  
**Marks Valid:** 15 working days  
**Law Link:** sc811.com/state-law/

|   |   |   |   |   |   |   |    |   |   |   |     |     |     |   |   |   |   |   |   |   |     |
|---|---|---|---|---|---|---|----|---|---|---|-----|-----|-----|---|---|---|---|---|---|---|-----|
| N | Y | Y | Y | Y | Y | N | Y* | Y | Y | Y | N** | N** | N** | Y | Y | Y | Y | Y | N | Y | 24" |
|---|---|---|---|---|---|---|----|---|---|---|-----|-----|-----|---|---|---|---|---|---|---|-----|

\*When unable to be adequately identified  
 \*\*Only specified work activities and depth  
 Updated version of the law effective May 22, 2026

**SOUTH DAKOTA / South Dakota 811 Center / 800-781-7474**

**Website:** sdonecall.com/state-law/  
**Hours:** 24 hours  
**Advance Notice:** 48 hours(excluding weekends and holidays)  
**Marks Valid:** 21 working days from start date and time on ticket  
**Law Link:** sdonecall.com/law.asp

|   |   |   |   |   |   |   |   |   |   |    |   |   |   |   |     |   |   |   |   |   |     |
|---|---|---|---|---|---|---|---|---|---|----|---|---|---|---|-----|---|---|---|---|---|-----|
| N | Y | Y | Y | Y | Y | N | Y | Y | Y | Y* | N | N | N | N | N** | Y | Y | Y | N | Y | 18" |
|---|---|---|---|---|---|---|---|---|---|----|---|---|---|---|-----|---|---|---|---|---|-----|

\* Damage reporting required. All damage must be reported to the facility operator, or if the operator is unknown, to South Dakota 811 Center.  
 \*\* For agricultural tilling and road and ditch maintenance to a depth of 18" only; homeowners have a 12" depth exception for tilling of soil and gardening

**TENNESSEE / Tennessee 811 / 800-351-1111**

**Website:** tn811.com • **Hours:** 24 hours  
**Advance Notice:** Not less than 3 working days, not more than 10 working days  
**Marks Valid:** 15 calendar days  
**Law Link:** https://www.tenn811.com/law

|   |   |   |   |   |   |   |   |   |   |   |   |   |   |   |   |   |   |   |   |   |     |
|---|---|---|---|---|---|---|---|---|---|---|---|---|---|---|---|---|---|---|---|---|-----|
| N | Y | Y | Y | Y | Y | N | Y | Y | Y | Y | Y | Y | Y | N | N | Y | Y | Y | N | N | 24" |
|---|---|---|---|---|---|---|---|---|---|---|---|---|---|---|---|---|---|---|---|---|-----|

| <b>Notification Center and State Law Directory</b><br><small>HELP US STAY UP TO DATE.<br/>                     Directory information is also available online at <a href="http://actsnowinc.com">actsnowinc.com</a>.</small><br><b>Note: Voice tickets may also be another acceptable form of ticket submission. Report any updates to this directory by calling 501-548-6363.</b><br><b>You can reach your local Notification Center in the U.S. by dialing 811.</b>   | TICKETS |        |        | STATE LAWS & PROVISIONS |                 |                  |                      |                          |                    |                   |                 | NOTIFICATION EXEMPTIONS |     |           |          | NOTIFICATIONS ACCEPTED |       |        |        | Tolerance Zone (either side of the utility plus the width of the utility) |           |          |                |
|---|---------|--------|--------|-------------------------|-----------------|------------------|----------------------|--------------------------|--------------------|-------------------|-----------------|-------------------------|-----|-----------|----------|------------------------|-------|--------|--------|---|-----------|----------|----------------|
|   | FAX     | Online | Mobile | Statewide Coverage      | Civil Penalties | Emergency Clause | Mandatory Membership | Excavator Permits Issued | Mandatory Premarks | Positive Response | Hand Dig Clause | Damage Reporting        | DOT | Homeowner | Railroad | Agriculture            | Depth | Damage | Design |   | Emergency | Overhead | Large Projects |
| <b>TEXAS / Texas811 / 800-344-8377</b>  |         |        |        |                         |                 |                  |                      |                          |                    |                   |                 |                         |     |           |          |                        |       |        |        |   |           |          |                |
| <b>Website:</b> <a href="http://texas811.org">texas811.org</a><br><b>Hours:</b> 24 hours<br><b>Advance Notice:</b> 48 hours (excluding weekends and holidays)<br><b>Marks Valid:</b> 14 working days<br><b>Law Links:</b> <a href="http://statutes.capitol.texas.gov/Docs/UT/htm/UT.251.htm">statutes.capitol.texas.gov/Docs/UT/htm/UT.251.htm</a>  | N       | Y      | Y      | Y                       | Y               | Y                | Y                    | N                        | N                  | Y                 | Y               | Y                       | Y   | N         | Y        | Y                      | 16"   | Y      | Y      | Y   | N         | N        | 18"            |
| <b>UTAH / Blue Stakes of Utah 811 / 800-662-4111</b>  |         |        |        |                         |                 |                  |                      |                          |                    |                   |                 |                         |     |           |          |                        |       |        |        |   |           |          |                |
| <b>Website:</b> <a href="http://bluestakes.org">bluestakes.org</a><br><b>Hours:</b> 8:00 AM - 4:00 PM, M-F<br><b>Advance Notice:</b> 3 business days, 72 hours notice<br><b>Marks Valid:</b> 21 calendar days<br><b>Law Link:</b> <a href="http://le.utah.gov/xcode/Title54/Chapter8A/54-8a.html">le.utah.gov/xcode/Title54/Chapter8A/54-8a.html</a>  | N       | Y      | Y      | Y                       | Y               | Y                | Y                    | N                        | N                  | Y                 | Y               | N                       | N   | N         | N        | N                      | N     | N      | N      | Y   | N         | N        | 24"            |
| <b>VERMONT / Dig Safe System, Inc. / 888-344-7233</b>   |         |        |        |                         |                 |                  |                      |                          |                    |                   |                 |                         |     |           |          |                        |       |        |        |   |           |          |                |
| <b>Website:</b> <a href="http://digsafe.com">digsafe.com</a><br><b>Hours:</b> 24 hours, 7 days<br><b>Advance Notice:</b> 72 hours (excluding weekends and holidays)<br><b>Marks Valid:</b> 30 days<br><b>Law Link:</b> <a href="http://digsafe.com/laws_rules.php">digsafe.com/laws_rules.php</a>   | N       | Y      | Y      | Y                       | Y               | Y                | Y                    | Y                        | Y                  | N                 | Y               | Y                       | N   | N         | N        | Y                      | N     | Y      | N      | Y   | N         | Y        | 18"            |
| <b>VIRGINIA / Virginia 811 / 800-552-7001</b>   |         |        |        |                         |                 |                  |                      |                          |                    |                   |                 |                         |     |           |          |                        |       |        |        |   |           |          |                |
| <b>Website:</b> <a href="http://va811.com">va811.com</a><br><b>Hours:</b> 24 hours, 7 days<br><b>Advance Notice:</b> 2 working days(excluding day of call)<br><b>Marks Valid:</b> 15 working days<br><b>Law Link:</b> <a href="http://va811.com/resources/laws-and-regulation/">va811.com/resources/laws-and-regulation/</a>  | N       | Y      | Y      | Y                       | Y               | Y                | Y                    | N                        | N                  | Y                 | Y               | N*                      | Y   | Y         | Y        | Y                      | N     | N      | Y      | Y   | N         | N        | 24"            |
| * No damage tickets in VA and anyone damaging a utility does not have to report the damage to Virginia 811, but they must report the damage to the operator, and for a gas damage, the SCC.   |         |        |        |                         |                 |                  |                      |                          |                    |                   |                 |                         |     |           |          |                        |       |        |        |   |           |          |                |
| <b>WASHINGTON / Washington 811 / 811 / 800-424-5500</b>   |         |        |        |                         |                 |                  |                      |                          |                    |                   |                 |                         |     |           |          |                        |       |        |        |   |           |          |                |
| <b>Washington 811</b><br><b>Website:</b> <a href="http://digsafewa.com">digsafewa.com</a><br><b>Northwest Utility Notification Center (NUNC)</b><br><b>Website:</b> <a href="http://digsafewa.com">digsafewa.com</a><br><b>Inland Empire Utility Coordinating Council (IEUCC)</b><br><b>Website:</b> <a href="http://digsafewa.com">digsafewa.com</a><br><b>Hours:</b> 24 hours, 7 days<br><b>Advance Notice:</b> 2 business days<br><b>Marks Valid:</b> 45 days<br><b>Law Link:</b> <a href="http://washington811.com/wa-dig-law-rcw-19-122/">washington811.com/wa-dig-law-rcw-19-122/</a> | N       | Y      | Y      | Y                       | Y               | Y                | Y                    | N                        | Y                  | N                 | Y               | Y                       | N   | Y         | N        | Y                      | Y     | Y      | Y      | Y   | N         | Y        | 24"            |
| <b>WASHINGTON D.C. / District One Call / 800-257-7777</b>   |         |        |        |                         |                 |                  |                      |                          |                    |                   |                 |                         |     |           |          |                        |       |        |        |   |           |          |                |
| <b>Website:</b> <a href="http://missutility.net">missutility.net</a><br><b>Hours:</b> 24 hours, 7 days<br><b>Advance Notice:</b> 96-business hours<br><b>Marks Valid:</b> 15 business days<br><b>Law Link:</b> <a href="https://code.dccouncil.gov/us/dc/council/code/titles/34/chapters/27/">https://code.dccouncil.gov/us/dc/council/code/titles/34/chapters/27/</a>  | N       | Y      | Y      | Y                       | Y               | Y                | Y                    | N                        | N                  | Y                 | Y               | N                       | N   | N         | N        | N                      | N     | N      | N      | Y   | N         | N        | 18"            |
| <b>WEST VIRGINIA / West Virginia 811 / 800-245-4848</b>   |         |        |        |                         |                 |                  |                      |                          |                    |                   |                 |                         |     |           |          |                        |       |        |        |   |           |          |                |
| <b>Website:</b> <a href="http://wv811.com">wv811.com</a><br><b>Hours:</b> 24 hours<br><b>Advance Notice:</b> 2 days but not more than 10<br><b>Marks Valid:</b> 10 days<br><b>Law Link:</b> <a href="http://wv811.com/one-call-law">wv811.com/one-call-law</a>  | N       | Y      | Y      | Y                       | Y               | Y                | Y                    | N                        | N                  | Y                 | Y               | Y                       | N   | N         | N        | Y                      | N     | Y      | Y      | Y   | N         | N        | 24"            |
| <b>WISCONSIN / Diggers Hotline / 800-242-8511</b>   |         |        |        |                         |                 |                  |                      |                          |                    |                   |                 |                         |     |           |          |                        |       |        |        |   |           |          |                |
| <b>Website:</b> <a href="http://diggershotline.com">diggershotline.com</a><br><b>Hours:</b> 24 hours, 7 days<br><b>Advance Notice:</b> 3 working days<br><b>Marks Valid:</b> For duration of work if marks remain visible and work is continuous<br><b>Law Link:</b> <a href="http://docs.legis.wisconsin.gov/statutes/statutes/182/0175">docs.legis.wisconsin.gov/statutes/statutes/182/0175</a>   | N       | Y      | Y      | Y                       | Y               | Y                | Y                    | N                        | N                  | N                 | Y               | N                       | N   | N         | N        | N                      | N     | Y      | Y      | Y   | N         | Y        | 18"            |



**Know what's below.  
Call before you dig.**

Expand public awareness by visiting 811BeforeYouDig.com. You will find a variety of downloadable elements available for use free in your company/organization's existing campaigns.

Note: Voice tickets may also be another acceptable form of ticket submission.



| TICKETS  | STATE LAWS & PROVISIONS |        |        |                    |                 |                  |                      |                          |                    |                   | NOTIFICATION EXEMPTIONS |                  |     |           | NOTIFICATIONS ACCEPTED |             |       |        | Tolerance Zone (either side of the utility plus the width of the utility) |        |           |          |                |
|--|-------------------------|--------|--------|--------------------|-----------------|------------------|----------------------|--------------------------|--------------------|-------------------|-------------------------|------------------|-----|-----------|------------------------|-------------|-------|--------|---|--------|-----------|----------|----------------|
|  | FAX                     | Online | Mobile | Statewide Coverage | Civil Penalties | Emergency Clause | Mandatory Membership | Excavator Permits Issued | Mandatory Premarks | Positive Response | Hand Dig Clause         | Damage Reporting | DOT | Homeowner | Railroad               | Agriculture | Depth | Damage |   | Design | Emergency | Overhead | Large Projects |
| <b>WYOMING / One-Call of Wyoming, Inc. / 811 or 1-800-849-2476 (if out of state)</b>   |                         |        |        |                    |                 |                  |                      |                          |                    |                   |                         |                  |     |           |                        |             |       |        |   |        |           |          |                |
| <b>Website:</b> onecallofwyoming.com<br><b>Hours:</b> 24 hours<br><b>Advance Notice:</b> 2 full business days<br><b>Marks Valid:</b> 14 business days<br><b>Law Link:</b> https://www.onecallofwyoming.com/wp-content/uploads/2022/10/WY-State-Statute.pdf |                         |        |        |                    |                 |                  |                      |                          |                    |                   |                         |                  |     |           |                        |             |       |        |   |        |           |          |                |
| N  | Y                       | Y      | Y      | Y                  | Y               | Y                | Y                    | N                        | Y                  | Y                 | Y                       | Y                | N   | N         | N                      | Y           | N     | Y      | Y   | Y      | N         | N        | 24"            |

**Canadian One Call and Provincial Law Directory**

**Click Before You Dig** **Cliquez Avant de Creuser**

Canadian One Call Centres Committee

| TICKETS   | PROVINCIAL LAWS & PROVISIONS |        |        |                    |                 |                  |                      |                          |                    |                   | NOTIFICATION EXEMPTIONS |                  |     |           | NOTIFICATIONS ACCEPTED |             |       |        | Tolerance Zone (either side of the utility plus the width of the utility) |        |           |          |                |
|---|------------------------------|--------|--------|--------------------|-----------------|------------------|----------------------|--------------------------|--------------------|-------------------|-------------------------|------------------|-----|-----------|------------------------|-------------|-------|--------|---|--------|-----------|----------|----------------|
|   | FAX                          | Online | Mobile | Statewide Coverage | Civil Penalties | Emergency Clause | Mandatory Membership | Excavator Permits Issued | Mandatory Premarks | Positive Response | Hand Dig Clause         | Damage Reporting | DOT | Homeowner | Railroad               | Agriculture | Depth | Damage |   | Design | Emergency | Overhead | Large Projects |
| <b>ALBERTA / Utility Safety Partners / 800-242-3447</b>   |                              |        |        |                    |                 |                  |                      |                          |                    |                   |                         |                  |     |           |                        |             |       |        |   |        |           |          |                |
| <b>Website:</b> utilitiesafety.ca<br><b>Hours:</b> 8:00 AM - 4:30 PM, M-F (Emergency or Online: 24/7)<br><b>Advance Notice:</b> 3-5 full working days<br><b>Marks Valid:</b> Determined by member   |                              |        |        |                    |                 |                  |                      |                          |                    |                   |                         |                  |     |           |                        |             |       |        |   |        |           |          |                |
| N   | Y                            | Y      | Y      | N                  | N               | N                | N                    | N                        | Y                  | Y                 | Y                       | N                | N   | N         | N                      | *           | Y     | Y      | Y   | N      | Y         | VARIES   |                |
| * 300 mm (12") hand tools only  |                              |        |        |                    |                 |                  |                      |                          |                    |                   |                         |                  |     |           |                        |             |       |        |   |        |           |          |                |
| <b>BRITISH COLUMBIA / BC 1 Call / 800-474-6886</b>  |                              |        |        |                    |                 |                  |                      |                          |                    |                   |                         |                  |     |           |                        |             |       |        |   |        |           |          |                |
| <b>Website:</b> bc1c.ca<br><b>Hours:</b> 24 hours / 7 days<br><b>Advance Notice:</b><br>Regular & Project - 3 working days excluding weekends and holidays<br>Large Project - 5 working days excluding weekends and holidays<br>Planning & Design - 10 working days excluding weekends and holidays<br><b>Marks Valid:</b> 60 calendar days |                              |        |        |                    |                 |                  |                      |                          |                    |                   |                         |                  |     |           |                        |             |       |        |   |        |           |          |                |
| N   | Y                            | Y      | Y      | N                  | Y               | N                | N                    | N                        | Y                  | N                 | Y                       | N                | N   | N         | N                      | N           | Y     | Y      | Y   | N      | Y         | VARIES   |                |
| <b>MANITOBA / Click Before You Dig Manitoba / 800-940-3447</b>  |                              |        |        |                    |                 |                  |                      |                          |                    |                   |                         |                  |     |           |                        |             |       |        |   |        |           |          |                |
| <b>Website:</b> ClickBeforeYouDigMB.com<br><b>Hours:</b> 8:00 AM - 5:00 PM<br><b>Advance Notice:</b> 3-5 full working days<br><b>Marks Valid:</b> Determined by member  |                              |        |        |                    |                 |                  |                      |                          |                    |                   |                         |                  |     |           |                        |             |       |        |   |        |           |          |                |
| N   | Y                            | Y      | Y      | N                  | N               | N                | N                    | N                        | Y                  | Y                 | N                       | N                | N   | N         | N                      | N           | Y     | N      | Y   | N      | Y         | VARIES   |                |
| <b>ONTARIO / Ontario One Call / 800-400-2255</b>  |                              |        |        |                    |                 |                  |                      |                          |                    |                   |                         |                  |     |           |                        |             |       |        |   |        |           |          |                |
| <b>Website:</b> OntarioOneCall.ca<br><b>Hours:</b> 24 hours, 365 days<br><b>Advance Notice:</b> 5 working days<br><b>Marks Valid:</b> Minimum 60 days<br><b>Law Link:</b> www.ontario.ca/laws/statute/12o04   |                              |        |        |                    |                 |                  |                      |                          |                    |                   |                         |                  |     |           |                        |             |       |        |   |        |           |          |                |
| N   | Y                            | N      | Y      | Y                  | Y               | Y                | N                    | N                        | Y                  | Y                 | Y                       | N                | N   | N         | N                      | N           | Y     | Y      | Y   | N      | Y         | VARIES   |                |
| <b>QUEBEC AND ATLANTIC PROVINCES / Info-Excavation / 800-663-9228</b>   |                              |        |        |                    |                 |                  |                      |                          |                    |                   |                         |                  |     |           |                        |             |       |        |   |        |           |          |                |
| <b>Website:</b> info-ex.com<br><b>Hours:</b> 24 hours/7 days<br><b>Advance Notice:</b> 72 hours (3 working days)<br><b>Marks Valid:</b> Maximum 180 days  |                              |        |        |                    |                 |                  |                      |                          |                    |                   |                         |                  |     |           |                        |             |       |        |   |        |           |          |                |
| N   | Y                            | Y      | Y      | N                  | Y               | N                | N                    | N                        | Y                  | N                 | Y                       | N                | N   | N         | N                      | N           | Y     | Y      | Y   | Y      | Y         | 1m       |                |
| <b>SASKATCHEWAN / Sask 1st Call / 866-828-4888</b>  |                              |        |        |                    |                 |                  |                      |                          |                    |                   |                         |                  |     |           |                        |             |       |        |   |        |           |          |                |
| <b>Website:</b> sask1stcall.com<br><b>Hours:</b> 8:00 AM - 4:30 PM, M-F (Emergency 24/7)<br><b>Advance Notice:</b> 3-5 full working days<br><b>Marks Valid:</b> 30 days   |                              |        |        |                    |                 |                  |                      |                          |                    |                   |                         |                  |     |           |                        |             |       |        |   |        |           |          |                |
| N   | Y                            | Y      | Y      | N                  | N               | N                | N                    | N                        | Y                  | N                 | N                       | N                | N   | N         | N                      | N           | Y     | Y      | Y   | N      | Y         | VARIES   |                |

# 811

# vs

# 911



**Primary Responsibility:** Coordinates pipelines/utility line locating and marking prior to excavation projects

**During Emergencies:** Can alert operators who are near but not directly involved

**Contact Instructions:** Call prior to excavating, grating or ditch clearing and to comply with damage reporting requirements



**Primary Responsibility:** Coordinates pipeline emergency notifications and initial response actions

**During Emergencies:** Can access pipeline maps, pipeline product information and pipeline emergency contact information

**Contact Instructions:** Call 911 immediately and notify the pipeline operator if you suspect a pipeline leak or witness intentional damage or pipeline vandalism

## Community Liaison Services

**Mission:**

To advance PHMSA’s pipeline safety mission by proactively engaging with pipeline stakeholders, providing technical expertise, and leveraging technology, data, and information to reduce pipeline risks and influence change through program and policy development.

**Vision:**

To serve as “trusted” and “credible” stewards of public safety and environmental protection by raising awareness and influencing change to continuously improve pipeline safety.

If you need assistance with any of the following pipeline safety related matters, please contact a PHMSA Community Liaison today:

- Pipeline safety policy/programs (damage prevention, public awareness, emergency response, PIPA, etc.)
- Pipeline stakeholder engagement and outreach
- Pipeline technical services and support (public inquiries, whistleblowers, post incident/accident communications, siting and permit initiatives)
- Questions about pipeline safety in your community

Community Liaisons are located within each PHMSA region.

**Community Liaison Services Program Manager**

**Marta Riendeau:** Marta.Riendeau@dot.gov • Phone: (609) 354-8010

**Central Region:**

Illinois; Indiana; Iowa; Kansas; Michigan; Minnesota; Missouri; Nebraska; North Dakota; South Dakota; Wisconsin.

**Dave Mulligan:** david.mulligan@dot.gov • Phone: (720) 963-3193

**Southern Region:**

Alabama; Florida; Georgia; Kentucky; Mississippi; North Carolina; Puerto Rico; South Carolina; Tennessee.

**Hung Nguyen:** hungnguyen@dot.gov • Phone: (202) 713-7913

**Eastern Region:**

Connecticut; Delaware; Maine; Maryland; Massachusetts; New Hampshire; New Jersey; New York; Ohio, Pennsylvania; Rhode Island; Vermont; Virginia; Washington, D.C.; West Virginia.

**Hung Nguyen:** hungnguyen@dot.gov • Phone: (202) 713-7913

**Southwest Region:**

Arkansas; Louisiana; New Mexico; Oklahoma; Texas.

**Marta Riendeau:** Marta.Riendeau@dot.gov • Phone: (609) 354-8010

**Western Region:**

Alaska; Arizona; California; Colorado; Hawaii; Idaho; Montana; Nevada; Oregon; Utah; Washington; Wyoming.

**Dave Mulligan:** david.mulligan@dot.gov • Phone: (720) 963-3193



| Company   | EMERGENCY   | NON-EMERGENCY  | WEB ADDRESS  |
|---|---|----------------|--|
| Alliance Pipeline (Operated by Enbridge)                | (800) 884-8811  | (888) 293-7867 | alliancepipeline.com   |
| Bayou Bridge Pipeline                                   | (800) 753-5531  | (877) 795-7271 | energytransfer.com   |
| Buckeye Partners, LP.                                   | (800) 331-4115  | (866) 432-4960 | buckeye.com/public-awareness                                   |
| CHS (Genex & Front Range Pipelines)                     | (800) 421-4122  | (855) 424-7747 | chsinc.com/pipelines   |
| CHS (Jayhawk & Kaw Pipelines)                           | (888) 542-9575  | (855) 424-7747 | chsinc.com/pipelines   |
| CHS (McPherson Refinery Pipelines)                      | (844) 721-6611  | (855) 424-7747 | chsinc.com/pipelines   |
| Crestwood Midstream Partners (Crude Oil)                | (800) 753-5531  | (877) 795-7271 | energytransfer.com   |
| Crestwood Midstream Partners (Natural Gas)              | (800) 375-5702  | (877) 795-7271 | energytransfer.com   |
| DAPL-ETCO   | (800) 753-5531  | (877) 795-7271 | energytransfer.com   |
| Enable Bakken Crude Services                            | (800) 753-5531  | (877) 795-7271 | energytransfer.com   |
| Enable Gas Transmission                                 | (800) 474-1954  | (877) 795-7271 | energytransfer.com   |
| Enable Mississippi River Transmission                   | (800) 325-4005  | (877) 795-7271 | energytransfer.com   |
| Enable Oklahoma Intrastate Transmission                 | (800) 522-8048  | (877) 795-7271 | energytransfer.com   |
| Enbridge Gas Transmission                               | (800) 231-7794  | (888) 293-7867 | enbridge.com/publicawareness                                   |
| Enbridge Liquids  | (800) 858-5253  | (877) 799-2650 | enbridge.com/publicawareness                                   |
| Energy Transfer Gas                                     | (877) 404-2730  | (877) 795-7271 | energytransfer.com   |
| Energy Transfer Gas (Houston)                           | (800) 392-1965  | (877) 795-7271 | energytransfer.com   |
| Energy Transfer Gulf Coast NGLs                         | (877) 839-7473  | (877) 795-7271 | energytransfer.com   |
| Energy Transfer Liquids                                 | (888) 844-8134  | (877) 795-7271 | energytransfer.com   |
| Enterprise Products Operating LLC                       | (888) 883-6308  | (866) 806-8152 | enterpriseproducts.com/safety-sustainability/public-awareness/ |
| ETC Tiger Pipeline                                      | (888) 844-3735  | (877) 795-7271 | energytransfer.com   |
| Fayetteville Express Pipeline                           | (888) 844-8030  | (877) 795-7271 | energytransfer.com   |
| Florida Gas Transmission Company                        | (800) 238-5066  | (877) 795-7271 | energytransfer.com   |
| Gulf Run Transmission                                   | (800) 325-4005  | (877) 795-7271 | energytransfer.com   |
| Houston Oil Terminal                                    | (800) 753-5531  | (877) 795-7271 | energytransfer.com   |
| Inland Corporation                                      | (800) 786-7440  | (877) 795-7271 | energytransfer.com   |
| Kansas Gas Service                                      | (888) 482-4950  | (800) 794-4780 | kansasgasservice.com   |
| Kern River Gas Transmission Company                     | (800) 272-4817  | (800) 420-7500 | kernriversgas.com  |
| Kinder Morgan, Inc. and its Subsidiaries and Affiliates | (866) 762-8442  | (800) 276-9927 | kindermorgan.com/public-awareness                              |
| Marathon Pipe Line LLC                                  | (833) 675-1234  | (855) 888-8056 | marathonpipeline.com   |
| Mid-Valley Pipeline Company                             | (800) 753-5531  | (877) 795-7271 | energytransfer.com   |
| NEXUS Gas Transmission (Operated by Enbridge)           | (855) 329-1781  | (888) 293-7867 | nexusgastransmission.com                                       |
| Northern Natural Gas Company                            | (888) 367-6671  | (888) 367-6671 | northernnaturalgas.com   |
| Panhandle Eastern Pipe Line                             | (800) 225-3913  | (877) 795-7271 | energytransfer.com   |
| Permian Express Pipeline                                | (800) 753-5531  | (877) 795-7271 | energytransfer.com   |
| Phillips 66 Pipeline LLC                                | (877) 267-2290  | (800) 231-2566 | phillips66.com/pipeline-safety/                                |
| Phillips 66 Pipeline LLC (DPC)                          | (888)-204-1781  | (800) 231-2566 | phillips66.com/pipeline-safety/                                |
| Pine Pipeline   | (800) 474-1954  | (877) 795-7271 | energytransfer.com   |
| Plains Pipeline, LP                                     | (800) 708-5071  | (713) 646-4100 | plains.com   |
| Rover Pipeline  | (800) 225-3913  | (877) 795-7271 | energytransfer.com   |
| Sabal Trail Transmission (Operated by Enbridge)         | (888) 568-7269  | (888) 293-7867 | sabaltrailtransmission.com                                     |
| Sea Robin Pipeline Company                              | (800) 225-3913  | (877) 795-7271 | energytransfer.com   |
| Southeast Supply Header                                 | (866) 977-7374  | (877) 795-7271 | energytransfer.com   |
| Southern Star Central Gas Pipeline                      | (800) 324-9696  | (888) 885-6008 | southernstar.com   |
| Stingray Pipeline Company                               | (800) 225-3913  | (877) 795-7271 | energytransfer.com   |
| Sunoco Pipeline (Crude Oil)                             | (800) 753-5531  | (877) 795-7271 | energytransfer.com   |
| Sunoco Pipeline (Natural Gas Liquids)                   | (877) 839-7473  | (877) 795-7271 | energytransfer.com   |
| Sunoco Pipeline (Refined Products)                      | (800) 786-7440  | (877) 795-7271 | energytransfer.com   |
| Tallgrass Cheyenne Connector                            | (877) 436-2253  | (303) 763-2950 | tallgrass.com  |
| Tallgrass East Cheyenne Gas Storage                     | (877) 436-2253  | (303) 763-2950 | tallgrass.com  |
| Tallgrass Interstate Gas Transmission                   | (888) 763-3690  | (303) 763-2950 | tallgrass.com  |
| Tallgrass Midstream                                     | (888) 763-3690  | (303) 763-2950 | tallgrass.com  |
| Tallgrass Pinyon Pipeline                               | (877) 436-2253  | (303) 763-2950 | tallgrass.com  |
| Tallgrass Pony Express Pipeline                         | (855) 220-1762  | (303) 763-2950 | tallgrass.com  |
| Tallgrass Powder River Gateway                          | (855) 220-1762  | (303) 763-2950 | tallgrass.com  |
| Tallgrass Rockies Express Pipeline                      | (877) 436-2253  | (303) 763-2950 | tallgrass.com  |
| Tallgrass Ruby Pipeline                                 | (877) 436-2253  | (303) 763-2950 | tallgrass.com  |
| Trailblazer CO2 Pipeline                                | (877) 335-3680  | (303) 763-2950 | tallgrass.com  |
| Trailblazer Pipeline                                    | (877) 299-3050  | (303) 763-2950 | tallgrass.com  |
| Texas Gas Service                                       | (800) 700-2443  | (800) 959-5325 | texasgasservice.com  |
| Transwestern Pipeline Company                           | (866) 999-8975  | (877) 795-7271 | energytransfer.com   |
| Trunkline Gas Company                                   | (800) 225-3913  | (877) 795-7271 | energytransfer.com   |
| Vector Pipeline (Operated by Enbridge)                  | (888) 427-7777  | (877) 799-2650 | vector-pipeline.com  |
| West Texas Gulf Pipeline                                | (800) 753-5531  | (877) 795-7271 | energytransfer.com   |
| White Cliffs Pipeline - Crude                           | (800) 753-5531  | (877) 795-7271 | energytransfer.com   |
| White Cliffs Pipeline - NGL                             | (877) 839-7473  | (877) 795-7271 | energytransfer.com   |
| Xcel Energy (Electric)                                  | (800) 895-1999  | (800) 895-4999 | xcelenergy.com   |
| Xcel Energy (Gas)                                       | (800) 895-2999<br>CO, TX - Gas<br>Transmission:<br>(800) 698-7811 | (800) 895-4999 | xcelenergy.com   |

**ACTS Now, Inc.**  
PO Box 644  
Conway, AR 72033

# MEMBERS



PROVIDING ENERGY. IMPROVING LIVES.



PASA is here to support your safety efforts!  
Visit [PipelineAgSafetyAlliance.com](http://PipelineAgSafetyAlliance.com) to request FREE:

• **Excavation Safety Guides** • **Safety Tools** • **Speakers**

If you need a custom safety message, we'll work with you to provide the right material for the ag professionals you work with. We're in this together.